

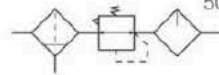
## AC Series FR.L combination



## Order Code

AC	2000	-	02	□
Series	Body Size	Port Size	Drain Mode	
	1010	M5   M5	Nil	Semi-Automatic Type
	2010	02   1/4"	D	Automatic Type
	3010	03   3/8"		
	4010	04   1/2"		
	5010	06   3/4"		
		10   1"		

## Symbol

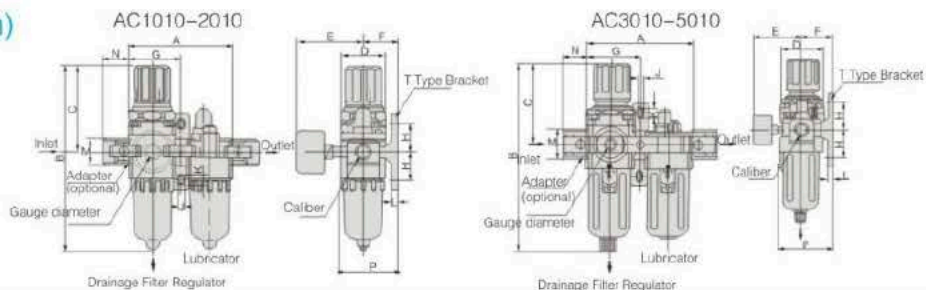


## Technical Specification

Proof Pressure	1.5Mpa   15bar , 217.5psi
Max. operating pressure	1.0Mpa   10bar, 145psi
Ambient Temperature	5~60°C(Not Frozen)
Filter Precision	40 μm
Suggested Lubricating Oil	Turbine No. 1 Oil(ISO VG32)
Bowl Material	PC
Cup Cover	AC1000-2000(Without) AC3000-5000(with)
Range of Regulation	AC1010:0.05-0.7Mpa ( 7.25-101.5 psi) AC2010-5010:0.05-0.85Mpa ( 7.25-123 psi)

Model		Specifications				
Manual	Automatic	Combinations		Max. Flow (L/min)	Port Size Rp(PT)	Pressure Gauge SizeRp(PT)
		Filter	Lubricator			
AC1010-M5	AC1010-M5D	AW1000	AL1000	90	M5x0.8	1/16
AC2010-02	AC2010-02D	AW2000	AL2000	500	1/4	1/8
AC3010-02	AC3010-02D	AW3000	AL3000	1700	1/4	1/8
AC3010-03	AC3010-03D	AW3000	AL3000	1700	3/8	1/8
AC4010-03	AC4010-03D	AW4000	AL4000	3000	3/8	1/8
AC4010-04	AC4010-04D	AW4000	AL4000	3000	1/2	1/4
AC4010-06	AC4010-06D	AW4000	AL4000	3000	3/4	1/4
AC5010-06	AC5010-06D	AW5000	AL5000	4000	3/4	1/4
AC5010-10	AC5010-10D	AW5000	AL5000	4000	1	1/4

## Dimension(mm)



Model	Port Size	A	B	C	D	E	F	G	H	J	K	L	M	N	P	With Auto Drain B
AC1010-M5	M5x0.8	58	108	50.5	25	33.5	25.5	28	20	4.5	7	3	18	16	41	127
AC2010-01/02	1/8 · 1/4	90	160	74	40	53	30	45	24	5.5	8.5	5	22	23	50	181
AC3010-02/03	1/4 · 3/8	117	207	89	53	54.5	41	58.5	35	6	10	7	34	26	70	245
AC4010-03/04	3/8 · 1/2	155	259	109	70	60	49	77	40	9	13	7	42	33	86	276
AC4010-06	3/4	165	263	111	70	66	51	82	40	9	13	8	48	36	88	281
AC5010-06/10	3/4 · 1	196	339	117	90	70	68	97.5	50	12	16	10	55	40	-	356