

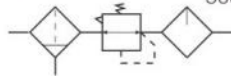
## AC Series F.R.L combination



## Order Code

AC	2000	-	02	□
Series	Body Size	Port Size	Drain Mode	
	1000	M5   M5	Nil	Semi-Automatic Type
	2000	02   1/4"	D	Automatic Type
	3000	03   3/8"		
	4000	04   1/2"		
	5000	06   3/4"		
		10   1"		

## Symbol

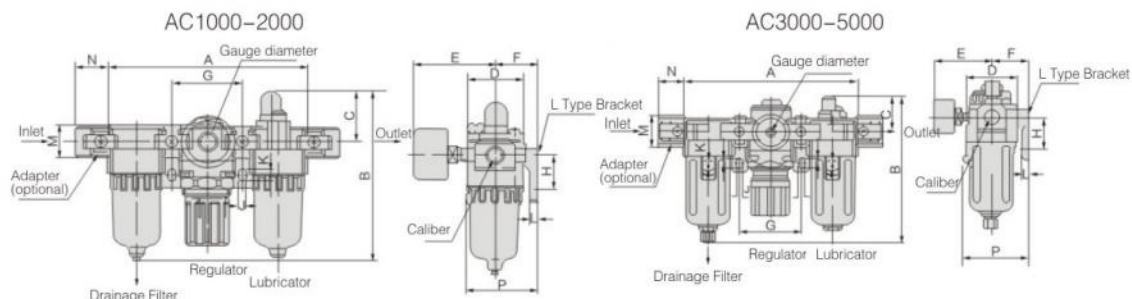


## Technical Specification

Proof Pressure	1.5Mpa   15bar , 217.5psi
Max. operating pressure	1.0Mpa   10bar, 145psi
Ambient Temperature	5-60°C(Not Frozen)
Filter Precision	40 μm
Suggested Lubricating Oil	Turbine No. 1 Oil(ISO VG32)
Bowl Material	PC
Cup Cover	AC1000-2000(Without) AC3000-5000(with)
Range of Regulation	AC1000:0.05-0.7Mpa(7.25-101.5 psi) AC2000-5000:0.05-0.85Mpa(7.25-123 psi)

Model		Specifications					
Manual	Automatic	Combinations			Max. Flow (L/min)	Port Size Rp(PT)	Pressure Gauge SizeRp(PT)
		Filter	Regulator	Lubricator			
AC1000-M5	AC1000-M5D	AF1000	AR1000	AL1000	90	M5x0.8	1/16
AC2000-02	AC2000-02D	AF2000	AR2000	AL2000	500	1/4	1/8
AC3000-02	AC3000-02D	AF3000	AR3000	AL3000	2000	1/4	1/8
AC3000-03	AC3000-03D	AF3000	AR3000	AL3000	2000	3/8	1/8
AC4000-03	AC4000-03D	AF4000	AR4000	AL4000	4000	3/8	1/4
AC4000-04	AC4000-04D	AF4000	AR4000	AL4000	4000	1/2	1/4
AC4000-06	AC4000-06D	AF4000	AR4000	AL4000	4500	3/4	1/4
AC5000-06	AC5000-06D	AF5000	AR5000	AL5000	5000	3/4	1/4
AC5000-10	AC5000-10D	AF5000	AR5000	AL5000	5000	1	1/4

## Dimension(mm)



Model	Port Size	A	B	C	D	E	F	G	H	J	K	L	M	N	P	With Auto Drain
																B
AC1000-M5	M5x0.8	89	87	25	25	33.5	25.5	31	20	4.5	7	3	18	16	41	106
AC2000-01/02	1/8 • 1/4	140	124.5	39	40	53	30	50	24	5.5	8.5	5	22	23	50	146
AC3000-02/03	1/4 • 3/8	182	158	37	53	54.5	41	64	35	6	10	7	34	26	70	197
AC4000-03/04	3/8 • 1/2	238	195	43	70	60	49	84	40	9	13	7	42	33	86	213
AC4000-06	3/4	253	197	43	70	66	51	89	40	9	13	8	48	36	88	215
AC5000-06/10	3/4 • 1	300	272	47	90	70	68	105	50	12	16	10	55	40	-	290