

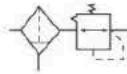
AW Series Air filter-regulator



Order Code

| | | | | |
|--------|-----------|---|-----------|---------------------------|
| AW | 2000 | - | 02 | D |
| Series | Body Size | | Port Size | Drain Mode |
| | 1000 | | M5 M5 | Nil Semi-Automatic Type |
| | 2000 | | 02 1/4" | D Automatic Type |
| | 3000 | | 03 3/8" | |
| | 4000 | | 04 1/2" | |
| | 5000 | | 06 3/4" | |
| | | | 10 1" | |

Symbol



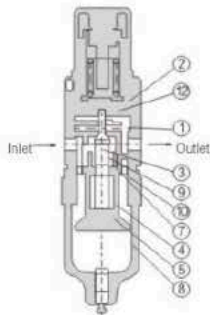
Technical Specification

| | |
|-------------------------|--|
| Proof Pressure | 1.5Mpa 15bar , 217.5psi |
| Max. operating pressure | 1.0Mpa 10bar, 145psi |
| Ambient Temperature | 5-60°C(Not Frozen) |
| Filter Precision | 40 μ m, 5 μ m(customized) |
| Bowl Material | PC |
| Cup Cover | AC1000-2000(Without) AC3000-5000(with) |
| Range of Regulation | AW1000:0.05-0.7Mpa(7.25-101.5 psi) AW2000-5000:0.05-0.85Mpa(7.25-123 psi) |

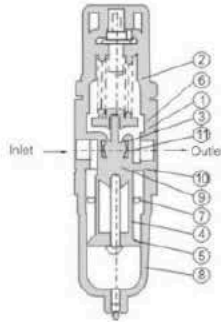
| Model | | Specifications | | |
|-----------|------------|------------------|-----------------|---------------------------|
| Manual | Automatic | Max. Flow(L/min) | Port SizeRp(PT) | Pressure Gauge SizeRp(PT) |
| AW1000-M5 | AW1000-M5D | 100 | M5x0.8 | 1/16 |
| AW2000-02 | AW2000-02D | 550 | 1/4 | 1/8 |
| AW3000-02 | AW3000-02D | 2000 | 1/4 | 1/8 |
| AW3000-03 | AW3000-03D | 2000 | 3/8 | 1/8 |
| AW4000-03 | AW4000-03D | 4000 | 3/8 | 1/4 |
| AW4000-04 | AW4000-04D | 4000 | 1/2 | 1/4 |
| AW4000-06 | AW4000-06D | 4500 | 3/4 | 1/4 |
| AW5000-06 | AW5000-06D | 5000 | 3/4 | 1/4 |
| AW5000-10 | AW5000-10D | 5000 | 1 | 1/4 |

Structure Charts

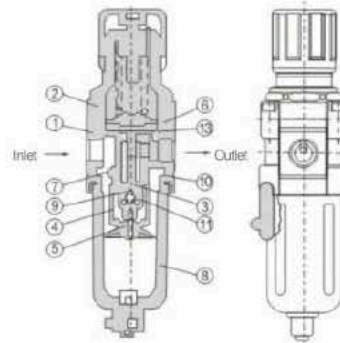
AW1000



AW2000

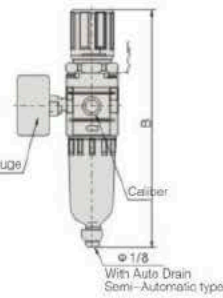
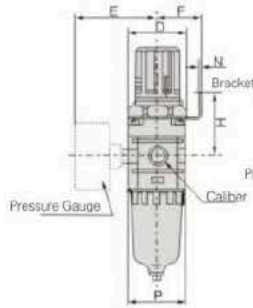
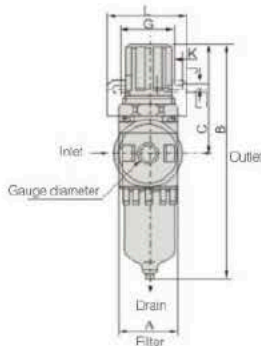


AW3000~4000

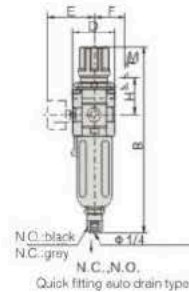
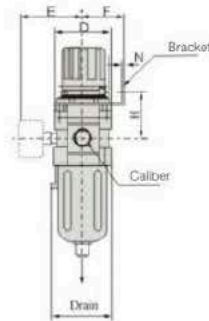
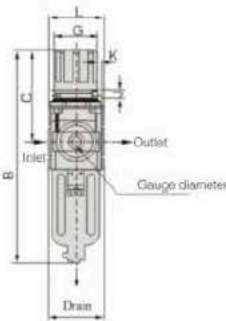


Dimension(mm)

AW1000~2000



AW3000~4000



| Model | Port Size | A | B | C | D | E | F | G | H | J | K | L | M | N | P | With Auto Drain |
|--------------|-----------|----|-----|------|----|------|----|------|----|-----|------|----|-----|------|----|-----------------|
| | | | | | | | | | | | | | | | | B |
| AW1000-M5 | M5x0.8 | 25 | 108 | 50.5 | 25 | 33.5 | 25 | 28 | 30 | 4.5 | 6.5 | 40 | 1.8 | 18.5 | 25 | 127 |
| AW2000-01/02 | 1/8 • 1/4 | 40 | 160 | 74 | 40 | 53 | 33 | 33.5 | 43 | 5.5 | 15 | 55 | 1.8 | 33.5 | 40 | 181 |
| AW3000-02/03 | 1/4 • 3/8 | 53 | 207 | 89 | 53 | 54.5 | 41 | 36 | 47 | 6.5 | 11.5 | 54 | 1.8 | 42.5 | 55 | 245 |
| AW4000-03/04 | 3/8 • 1/2 | 70 | 259 | 109 | 70 | 60 | 49 | 53 | 52 | 8.5 | 10.5 | 70 | 1.8 | 52.5 | 72 | 276 |
| AW4000-06 | 3/4 | 75 | 263 | 111 | 70 | 66 | 49 | 53 | 56 | 8.5 | 10.5 | 70 | 1.8 | 52.5 | 72 | 281 |
| AW5000-06/10 | 3/4 • 1 | 90 | 339 | 117 | 90 | 70 | 49 | 53 | 62 | 8.5 | 10.5 | 70 | 1.8 | 52.5 | - | 356 |