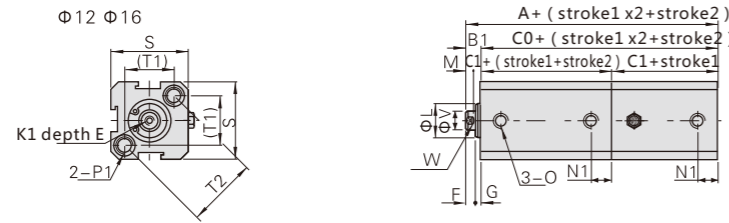
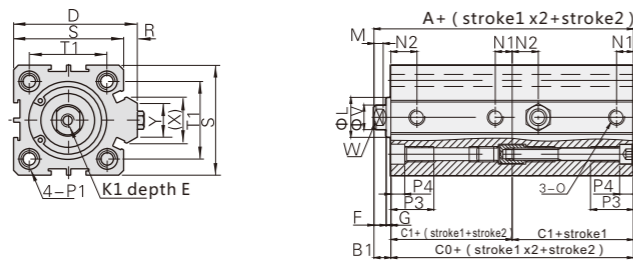


■ Dimensions (mm)

CBM (Multi-stroke)



Φ20~Φ100 (without Φ32)



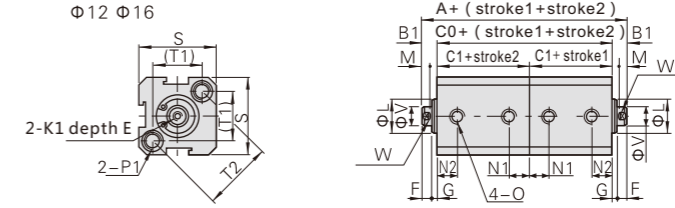
Bore	symbol A		C0		C1		N1		N2		B1
	Standard	Magnet	Standard	Magnet	Standard	Magnet	St=5	St>5	St=5	St>5	
12	39	59	34	54	17	27	5	5	7.5	7.5	5
16	42.5	62.5	37	57	18.5	28.5	5.5	5.5	8	8	5.5
20	44.5	64.5	39	59	19.5	29.5	5.5	5.5	9	9	5.5
25	48	68	42	62	21	31	5.5	5.5	9.2	9.2	6
32	56	76	49	69	24.5	34.5	6.5	9	9	9	7
40	59	79	52	72	26	36	7.5	7.5	9.5	9.5	7
50	65	85	56	76	28	38	8	10.5	8	10.5	9
63	73	93	64	84	32	42	9.5	11	9.5	12	9
80	93	113	82	102	41	51	11.5	14.5	11.5	14.5	11
100	114	134	102	122	51	61	16	20.5	16	20.5	12

Bore	D	E	F	G	K1	L	M	O	R
12	—	6	4	1	M3×0.5	10.2	3	M5X0.8	—
16	—	6	4	1.5	M3×0.5	11	3	M5X0.8	—
20	36	8	4	1.5	M4×0.7	13	3	M5X0.8	2
25	42	10	4	2	M5×0.8	17	3	M5X0.8	2
32	50	12	4	2.4	M6×1.0	22	3	Rc1/8	6
40	58.5	12	4	3	M8×1.25	28	3	Rc1/8	6.5
50	71.5	15	5	4	M10×1.5	38	3	Rc1/4	9.5
63	84.5	15	5	4	M10×1.5	40	3	Rc1/4	9.5
80	104	20	6	5	M14×1.5	45	4	Rc3/8	10
100	124	20	7	5	M18×1.5	55	4	Rc3/8	10

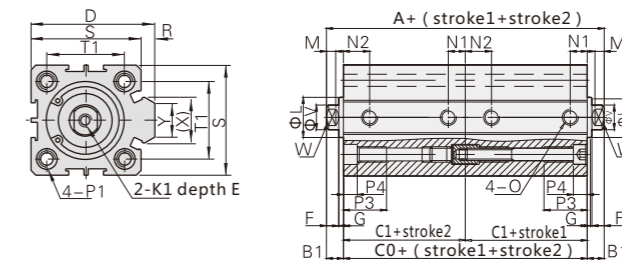
Bore	P1	P3	P4	S	T1	T2	V	W	X	Y
12	Counterbore: Φ7 Thread: M5×0.8 Through-hole: Φ4.2	12	4.5	25	16.2	23	6	5	—	—
16	Counterbore: Φ7 Thread: M5×0.8 Through-hole: Φ4.2	12	4.5	29	19.8	28	6	5	—	—
20	Counterbore: Φ7 Thread: M5×0.8 Through-hole: Φ4.2	14	4.5	34	24	—	8	6	11.3	10
25	Counterbore: Φ8.7 Thread: M6×1.0 Through-hole: Φ5.3	15	5.5	40	28	—	10	8	12	10
32	Counterbore: Φ8.7 Thread: M6×1.0 Through-hole: Φ5.3	16	5.5	44	34	—	12	10	18.3	15
40	Counterbore: Φ10.3 Thread: M8×1.25 Through-hole: Φ6.7	20	7.5	52	40	—	16	14	21.7	16
50	Counterbore: Φ11 Thread: M8×1.25 Through-hole: Φ6.7	25	8.5	62	48	—	20	17	30	20
63	Counterbore: Φ11 Thread: M8×1.25 Through-hole: Φ6.7	25	8.5	75	60	—	20	17	28.7	20
80	Counterbore: Φ16.5 Thread: M12×1.75 Through-hole: Φ10.3	25	10.5	94	74	—	25	22	36	26
100	Counterbore: Φ17.5 Thread: M14×2.0 Through-hole: Φ12.2	30	13.5	114	90	—	32	27	35	26

■ Dimensions (mm)

CBB (Double headed)



Φ20~Φ100 (without Φ32)



Bore	Symbol A		C0		C1		N1		N2		B1
	Standard	Magnet	Standard	Magnet	Standard	Magnet	St=5	St>5	St=5	St>5	
12	44	64	34	54	17	27	5	5	7.5	7.5	5
16	48	68	37	57	18.5	28.5	5.5	5.5	8	8	5.5
20	50	70	39	59	19.5	29.5	5.5	5.5	9	9	5.5
25	54	74	42	62	21	31	5.5	5.5	9.2	9.2	6
32	63	83	49	69	24.5	34.5	6.5	9	9	9	7
40	66	86	52	72	26	36	7.5	7.5	9.5	9.5	7
50	74	94	56	76	28	38	8	10.5	8	10.5	9
63	82	102	64	84	32	42	9.5	11	9.5	12	9
80	104	124	82	102	41	51	11.5	14.5	11.5	14.5	11
100	126	146	102	122	51	61	16	20.5	16	20.5	12

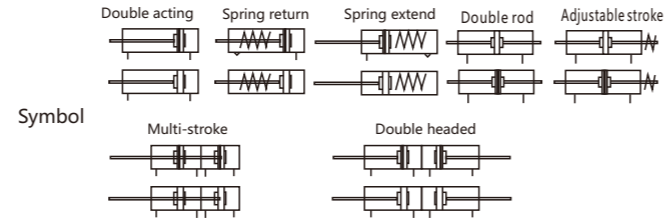
Bore	D	E	F	G	K1	L	M	O	R
12	—	6	4	1	M3×0.5	10	3	M5X0.8	—
16	—	6	4	1.5	M3×0.5	11	3	M5X0.8	—
20	36	8	4	1.5	M4×0.7	13	3	M5X0.8	2
25	42	10	4	2	M5×0.8	17	3	M5X0.8	2
32	50	12	4	2.4	M6×1.0	22	3	Rc1/8	6
40	58.5	12	4	3	M8×1.25	28	3	Rc1/8	6.5
50	71.5	15	5	4	M10×1.5	38	3	Rc1/4	9.5
63	84.5	15	5	4	M10×1.5	40	3	Rc1/4	9.5
80	104	20	6	5	M14×1.5	45	4	Rc3/8	10
100	124	20	7	5	M18×1.5	55	4	Rc3/8	10

Bore	P1	P3	P4	S	T1	T2	V	W	X	Y
12	Counterbore: Φ7 Thread: M5×0.8 Through-hole: Φ4.2	12	4.5	25	16.2	23	6	5	—	—
16	Counterbore: Φ7 Thread: M5×0.8 Through-hole: Φ4.2	12	4.5	29	19.8	28	6	5	—	—
20	Counterbore: Φ7 Thread: M5×0.8 Through-hole: Φ4.2	14	4.5	34	24	—	8	6	11.3	10
25	Counterbore: Φ8.7 Thread: M6×1.0 Through-hole: Φ5.3	15	5.5	40	28	—	10	8	12	10
32	Counterbore: Φ8.7 Thread: M6×1.0 Through-hole: Φ5.3	16	5.5	44	34	—	12	10	18.3	15
40	Counterbore: Φ10.3 Thread: M8×1.25 Through-hole: Φ6.7	20	7.5	52	40	—	16	14	21.7	16
50	Counterbore: Φ11 Thread: M8×1.25 Through-hole: Φ6.7	25	8.5	62	48	—	20	17	30	20
63	Counterbore: Φ11 Thread: M8×1.25 Through-hole: Φ6.7	25	8.5	75	60	—	20	17	28.7	20
80	Counterbore: Φ16.5 Thread: M12×1.75 Through-hole: Φ10.3	25	10.5	94	74	—	25	22	36	26
100	Counterbore: Φ17.5 Thread: M14×2.0 Through-hole: Φ12.2	30	13.5	114	90	—	32	27	35	26

Product Feature



Compact structure, nice appearance, direct-assembly.



Specification

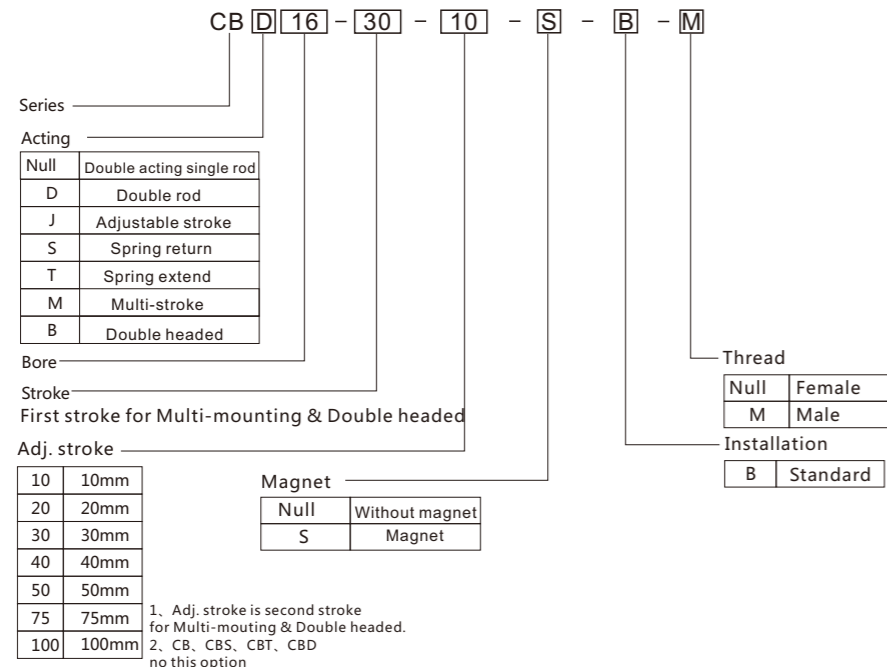
Bore (mm)	12	16	20	25	32	40	50	63	80	100
Action	Double acting									
Fluid	Compressed air									
Pressure range(MPa)	0.1~0.9									
Proof pressure(MPa)	1.35									
Temp. range(°C)	- 10~60									
Speed range (mm/s)	30~500mm/s									
Material of body	Aluminum alloy									
Cushion	Rubber bumper									
Port size	M5×0.8									
Code of S/K	CB12-R1	CB16-R1	CB20-R1	CB25-R1	CB32-R1	CB40-R1	CB50-R1	CB63-R1	CB80-R1	CB100-R1

Please use ISOVG32 oil if needed.

Stroke/Auto switch type

Bore (mm)	12	16	20	25	32	40	50	63	80	100	Switch model	Switch model
Double acting	Without magnet	5~60mm	5~85mm	5~90mm	100~110mm	5~90mm	100~130mm					
	Magnet	5mm/level	5mm/level	5mm/level	10mm/level	5mm/level	10mm/level					
Single acting	Without magnet	5~30mm	5~30mm	5~30mm	5~30mm	—	—					
	Magnet	5mm/level	5mm/level	5mm/level	5mm/level	5mm/level	—					
Longest stroke	60mm	100mm	120mm	130mm								

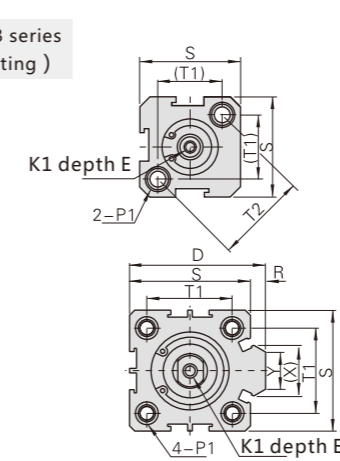
Ordering Code



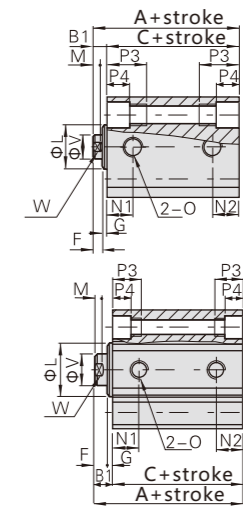
Dimensions (mm)

Compact cylinder: CB series
Standard (double acting)

Φ12 Φ16



Φ20~Φ100



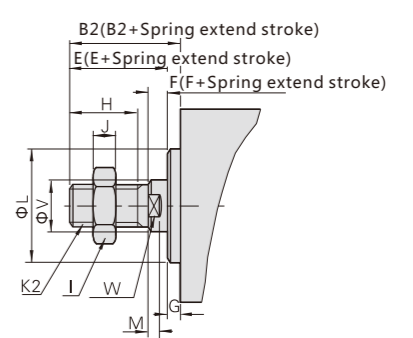
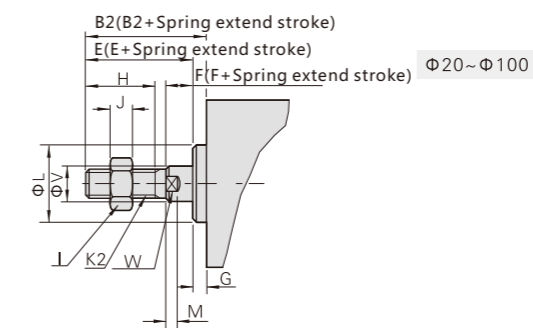
Note1) : Φ32 Size illustration
Standard Stroke≤30 A=31.5 C=24.5
Standard Stroke≥35 A=41.5 C=34.5

Symbol	Standard		Magnet		B1	D	E	F	G	K1	L	M	N1		N2		
	A	C	A	C									S=5	S>5	S=5	S>5	
Bore	12	22	17	32	27	5	-	6	4	1	M3×0.5	10	3	7.5	7.5	5	5
16	24	18.5	34	28.5	5.5	-	6	4	1.5	M3×0.5	11	3	7.5	7.5	5	5.5	
20	25	19.5	35	29.5	5.5	36	8	4	1.5	M4×0.7	13	3	8.5	8.5	5.5	5.5	
25	27	21	37	31	6	42	10	4	2	M5×0.8	17	3	8.5	8.5	5.5	5.5	
32	Note1	Note1	41.5	34.5	7	50	12	4.6	2.4	M6×1.0	22	3	7.5	9.5	6.5	8	
40	33	26	43	36	7	58.5	12	4	3	M8×1.25	28	3	10	10	7	7	
50	37	28	47	38	9	71.5	15	5	4	M10×1.5	38	3	8	11.5	8	10.5	
63	41	32	51	42	9	84.5	15	5	4	M10×1.5	40	3	9.5	11	9.5	11	
80	52	41	62	51	11	104	20	6	5	M14×1.5	45	4	14	14	1.4	14	
100	63	51	63	51	12	124	20	7	5	M18×1.5	55	4	17	20	15	15	

Bore	O	P1	P3	P4	R	S	T1	T2	V	W	X	Y
12	M5X0.8	Counterbore : Φ7 Thread : M5×0.8 Through-hole : Φ4.2	12	4.5	—	25	16.2	23	6	5	—	—
16	M5X0.8	Counterbore : Φ7 Thread : M5×0.8 Through-hole : Φ4.2	12	4.5	—	29	19.8	28	6	5	—	—
20	M5X0.8	Counterbore : Φ7 Thread : M5×0.8 Through-hole : Φ4.2	14	4.5	2	34	24	—	8	6	11.3	10
25	M5X0.8	Counterbore : Φ8.7 Thread : M6×1.0 Through-hole : Φ5.3	15	5.5	2	40	28	—	10	8	12	10
32	Rc1/8	Counterbore : Φ8.7 Thread : M6×1.0 Through-hole : Φ5.3	16	5.5	6	44	34	—	12	10	18.3	15
40	Rc1/8	Counterbore : Φ10.3 Thread : M8×1.25 Through-hole : Φ6.7	20	7.5	6.5	52	40	—	16	14	21.7	16
50	Rc1/4	Counterbore : Φ11 Thread : M8×1.25 Through-hole : Φ6.7	25	8.5	9.5	62	48	—	20	17	30	20
63	Rc1/4	Counterbore : Φ11 Thread : M8×1.25 Through-hole : Φ6.7	25	8.5	9.5	75	60	—	20	17	28.7	20
80	Rc3/8	Counterbore : Φ16 Thread : M12×1.75 Through-hole : Φ10.3	25	10.5	10	94	74	—	25	22	36	26
100	Rc3/8	Counterbore : Φ17.5 Thread : M14×2.0 Through-hole : Φ12.2	30	13	10	114	90	—	32	27	35	26

Male thread

Φ12 Φ16



Symbol	Bore	B2	E	F	G		H	I	J	K2	L	M	V	W
					Null	CBD/CBJ								
12	17	16	4	1	10	8	4	M5×0.8	10	3	6	5		
16	17.5	16	4	1.5	10	8	4	M5×0.8	11	3	6	5		
20	20.5	19	4	1.5	13	10	5	M6×1.0	13	3	8	6		
25	23	21	4	2	15	12	5	M8×1.25	17	3	10	8		
32	25	22	4	3	15	17	6	M10×1.25	22	3	12	10		
40	35	32	4	3	25	19	8	M14×1.5	28	3	16	14		
50	37	33	5	4	25	27	11	M18×1.5	38	3	20	17		
63	37	33	5	4	25	27	11	M18×1.5	40	3	20	17		
80	44	39	6	5	30	32	13	M22×1.5	45	4	25	22		
100	50	45	7	5	35	36	13	M26×1.5	55	4	32	27		