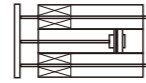




## Product feature

Small structure, side resistance load, high non-rotating, easy mount, two piping type options.

Symbol

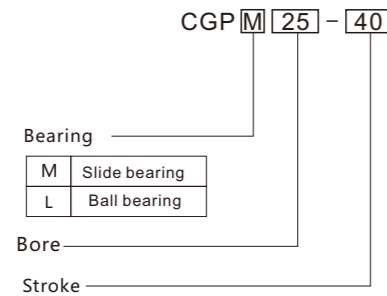


## Specification

Bore (mm)	12	16	20	25	32	40	50	63	
Fluid	Compressed air								
Action	Double acting								
Max. pressure (MPa)	1.0								
Min. pressure (MPa)	0.12							0.1	
Ambient and fluid temp.	-10~+60°C (No freezing)								
Piston speed	50~500mm/s								
Cushion	Rubber bumper on both ends								
*Lubrication	Non-lube								
Bearing	Slide bearing/Ball bearing								
Non-rotating accuracy	Slide bearing	±0.08°	±0.07°	±0.06°					±0.05°
	Ball bearing	±0.10°	±0.09°	±0.08°					±0.06°
Port size	M5×0.8	Rc1/8					Rc1/4		

Please use ISOVG32 oil if needed.

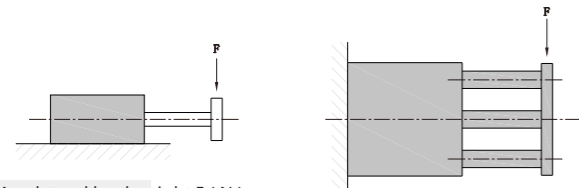
## Ordering code



## Stroke/Auto switch type

Bore(mm)	Standard stroke*(mm)	Switch model
12, 16	10 20 30 40 50 75 100 125 150 175 200	KTX-07R KTX-07P
20, 25	20 30 40 50 75 100 125 150 175 200	
32, 40, 50, 63	25 50 75 100 125 150 175 200	

## Load weight and torque



Max. lateral load weight F (N)

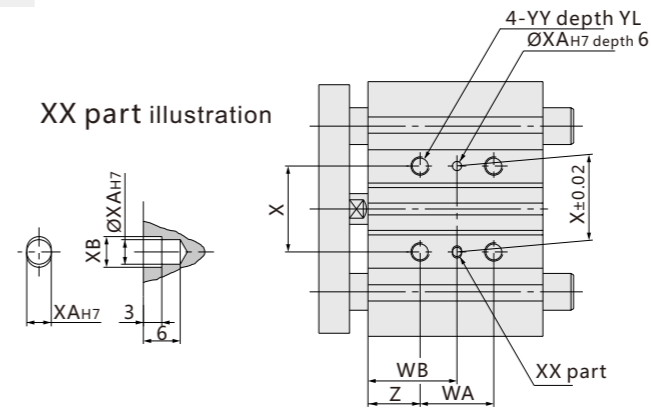
Stroke (mm)	Bearing	Stroke(mm)																							
		10	20	25	30	40	50	75	100	125	150	175	200	10	20	25	30	40	50	75	100	125	150	175	200
12	CGPM	24	19	-	14	13	26	22	19	17	15	13	37	27	-	22	35	30	23	18	15	12	11	10	
	CGPL	37	27	-	22	35	30	23	18	15	12	11	10	37	27	-	22	35	30	23	18	15	12	11	10
16	CGPM	38	31	-	27	23	21	37	32	27	24	22	20	54	40	-	32	54	47	35	28	23	20	17	15
	CGPL	54	40	-	32	54	47	35	28	23	20	17	15	54	40	-	32	54	47	35	28	23	20	17	15
20	CGPM	-	49	-	43	38	35	87	75	66	59	54	49	-	69	-	60	54	49	116	100	88	79	71	65
	CGPL	-	69	-	60	54	49	116	100	88	79	71	65	-	69	-	60	54	49	116	100	88	79	71	65
25	CGPM	-	82	-	68	132	118	93	77	80	70	62	55	-	82	-	68	132	118	93	77	80	70	62	55
	CGPL	-	82	-	68	132	118	93	77	80	70	62	55	-	82	-	68	132	118	93	77	80	70	62	55
32	CGPM	-	-	203	-	164	182	159	142	127	116	106	-	-	203	-	164	182	159	142	127	116	106		
	CGPL	-	-	203	-	164	182	159	142	127	116	106	-	-	203	-	164	182	159	142	127	116	106		
40	CGPM	-	-	190	-	157	163	144	203	185	171	158	-	-	190	-	157	163	144	203	185	171	158		
	CGPL	-	-	190	-	157	163	144	203	185	171	158	-	-	190	-	157	163	144	203	185	171	158		
50	CGPM	-	-	296	-	245	273	241	216	195	179	164	-	-	296	-	245	273	241	216	195	179	164		
	CGPL	-	-	296	-	245	273	241	216	195	179	164	-	-	296	-	245	273	241	216	195	179	164		
63	CGPM	-	-	206	-	171	221	196	262	240	221	205	-	-	206	-	171	221	196	262	240	221	205		
	CGPL	-	-	206	-	171	221	196	262	240	221	205	-	-	206	-	171	221	196	262	240	221	205		

Max. torque T(N.m)

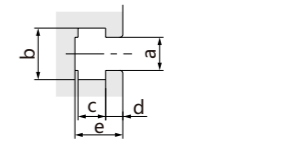
Stroke (mm)	Bearing	Stroke(mm)																							
		10	20	25	30	40	50	75	100	125	150	175	200	10	20	25	30	40	50	75	100	125	150	175	200
12	CGPM	0.39	0.32	-	0.27	0.24	0.21	0.43	0.36	0.31	0.27	0.24	0.22	0.61	0.45	-	0.35	0.58	0.50	0.37	0.29	0.24	0.20	0.18	0.16
	CGPL	0.69	0.58	-	0.49	0.43	0.38	0.69	0.58	0.50	0.44	0.40	0.36	0.69	0.58	-	0.49	0.43	0.38	0.69	0.58	0.50	0.44	0.40	0.36
16	CGPM	-	1.05	-	0.93	0.83	0.75	1.88	1.63	1.44	1.28	1.16	1.06	-	1.05	-	0.93	0.83	0.75	1.88	1.63	1.44	1.28	1.16	1.06
	CGPL	-	1.26	-	1.03	2.17	1.94	1.52	1.25	1.34	1.17	1.03	0.93	-	1.26	-	1.03	2.17	1.94	1.52	1.25	1.34	1.17	1.03	0.93
20	CGPM	-	1.76	-	1.55	1.38	1.25	2.96	2.57	2.26	2.02	1.83	1.67	-	1.76	-	1.55	1.38	1.25	2.96	2.57	2.26	2.02	1.83	1.67
	CGPL	-	2.11	-	1.75	3.37	3.02	2.38	1.97	2.05	1.78	1.58	1.41	-	2.11	-	1.75	3.37	3.02	2.38	1.97	2.05	1.78	1.58	1.41
25	CGPM	-	-	6.35	-	5.13	5.69	4.97	4.42	3.98	3.61	3.31	-	-	6.35	-	5.13	5.69	4.97	4.42	3.98	3.61	3.31		
	CGPL	-	-	6.35	-	5.13	5.69	4.97	4.42	3.98	3.61	3.31	-	-	6.35	-	5.13	5.69	4.97	4.42	3.98	3.61	3.31		
32	CGPM	-	-	7.00	-	5.66	6.27	5.48	4.87	4.38	3.98	3.65	-	-	7.00	-	5.66	6.27	5.48	4.87	4.38	3.98	3.65		
	CGPL	-	-	7.00	-	5.66	6.27	5.48	4.87	4.38	3.98	3.65	-	-	7.00	-	5.66	6.27	5.48	4.87	4.38	3.98	3.65		
40	CGPM	-	-	6.55	-	5.39	5.62	4.96	6.98	6.38	5.87	5.43	-	-	6.55	-	5.39	5.62	4.96	6.98	6.38	5.87	5.43		
	CGPL	-	-	6.55	-	5.39	5.62	4.96	6.98	6.38	5.87	5.43	-	-	6.55	-	5.39	5.62	4.96	6.98	6.38	5.87	5.43		
50	CGPM	-	-	13.0	-	10.8	12.0	10.6	9.50	8.60	7.86	7.24	-	-	13.0	-	10.8	12.0	10.6	9.50	8.60	7.86	7.24		
	CGPL	-	-	13.0	-	10.8	12.0	10.6	9.50	8.60	7.86	7.24	-	-	13.0	-	10.8	12.0	10.6	9.50	8.60	7.86	7.24		
63	CGPM	-	-	14.7	-	12.1	13.5	11.9	10.7	9.69	8.86	8.16	-	-	14.7	-	12.1	13.5	11.9	10.7	9.69	8.86	8.16		
	CGPL	-	-	14.7	-	12.1	13.5	11.9	10.7	9.69	8.86	8.16	-	-	14.7	-	12.1	13.5	11.9	10.7	9.69	8.86	8.16		

## Dimensions (mm)

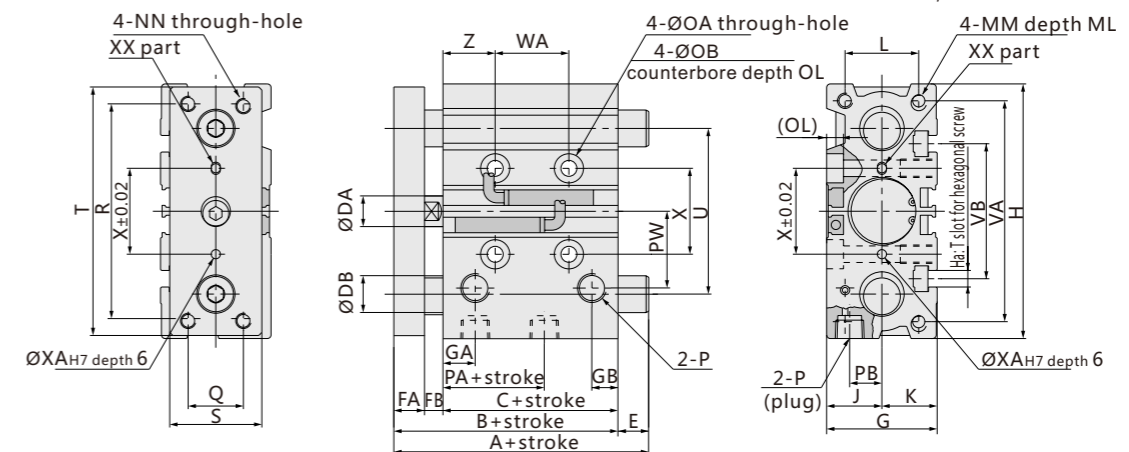
CGP12~25



### size of T slot



Bore (mm)	a	b	c	d	e
12	4.4	7.4	3.7	2	6.2
16	4.4	7.4	3.7	2.5	6.7
20	5.4	8.4	4.5	2.8	7.8
25	5.4	8.4	4.5	3	8.2



CGPM, CGPL common dimensions

Bore (mm)	Standard stroke	B	C	DA	FA	FB	G	GA	GB	H	J	K	L	MM	ML	NN	OA	OB	OL	P	PA	PB	PW	Q
		st=stroke																						
12	10,20,30,40,50	42	29	6	8	5	26	8.5	8.5	58	13	13	18	M4×0.7	10	M4×0.7	4.3	8	4.5	M5×0.8	13	8	18	14
	75,100,125,150	46	33	8	8	5	30	9.5	9	64	15	15	22	M5×0.8	12	M5×0.8	4.3	8	4.5	M5×0.8	15	10	19	16
16	20,30,40,50,75,100	53	37	10	10	6	36	10	9.5	83	18	18	24	M5×0.8	13	M5×0.8	5.3	9.5	5.5	1/8	12.5	11.5	25	18
	125,150,175,200	53.5	37.5	12	10	6	42	11.5	10	93	21	21	30	M6×1.0	15	M6×1.0	5.3	9.5	5.5	1/8	12.5	13.5	28.5	26

Bore (mm)	Standard stroke	R	S	T	U	VA	VB	WA			WB			X	XA	XB	YY	YL	Z
		<30st	31st~100st	101st~200st	<30st	31st~100st	101st~200st	<30st	31st~100st	>101st	<30st	31st~100st	>101st						
12	10,20,30,40,50	48	22	56	41	50	37	20	40	110	15	25	60	23	3	3.5	M5×0.8	10	5
	75,100,125,150	54	25	62	46	56	38	24	44	110	17	27	60	24	3	3.5	M5×0.8	10	5
16	20,30,40,50,75,100	70	30	81	54	72	44	24	44	120	29	39	77	28	3	3.5	M6×1.0	12	17
	125,150,175,200	78	38	91	64	82	50	24	44	120	29	39	77	34	4	4.5	M6×1.0	12	17

CGPM (Slide bearing) size A, DB, E

Bore (mm)	A			DB	E		
	<30st	31st~100st	>101st		<30st	31~100st	>101st
12	42	55	77	8	0	13	35
16	46	65	89	10	0	19	43

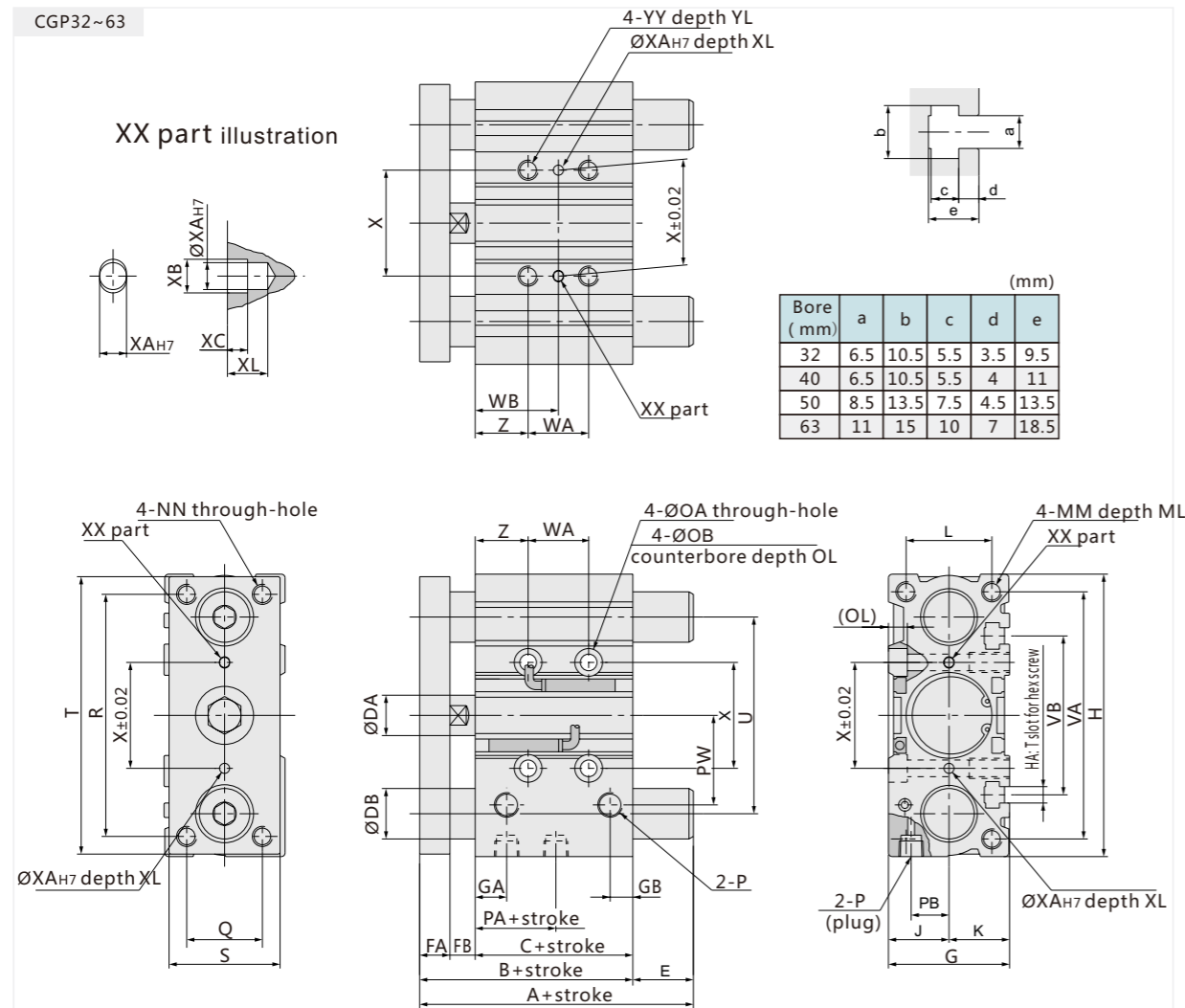
CGPL (Ball bearing) size A, DB, E

Bore (mm)	A			DB	E		
	<30st	31st~100st	>101st		<30st	31st~100st	>101st
12	42	55	77	6	0	13	35
16	46	65	89	8	0	19	43

Bore (mm)	A			DB		E		
	<50st	51st~100st	>101st	CGPM	CGPL	<50st	51~100st	>101st
20	53	78	103	12	10	0	25	50
25	53.5	80.5	104.5	16	12	0	27	51

## ■ Dimensions ( mm )

CGP32~63



Bore (mm)	a	b	c	d	e
32	6.5	10.5	5.5	3.5	9.5
40	6.5	10.5	5.5	4	11
50	8.5	13.5	7.5	4.5	13.5
63	11	15	10	7	18.5

CGPM, CGPL common dimensions

st=stroke

Bore (mm)	Standard stroke	B	C	DA	FA	FB	G	GA	GB	H	J	K	L	MM	ML	NN	OA	OB	OL	P	PA	PB	PW	Q
32	25,50,75,100,125,150,175,200	59.5	37.5	16	12	10	48	10.5	10	112	24	24	34	M8×1.25	20	M8×1.25	6.5	11	7.5	1/8	7	16	34	30
40		66	44	16	12	10	54	13.5	11	120	27	27	40	M8×1.25	20	M8×1.25	6.5	11	7.5	1/8	13	18	38	30
50		72	44	20	16	12	64	13.5	11	148	32	32	46	M10×1.5	22	M10×1.5	8.6	14	9	1/4	9	21.5	47	40
63		77	49	20	16	12	78	15.5	13.5	162	39	39	58	M10×1.5	22	M10×1.5	8.6	14	9	1/4	14	28	55	50

Bore (mm)	R	S	T	U	VA	VB	WA			WB			X	XA	XB	XC	XL	YY	YL	Z
							<40st	41st~110st	111st~200st	<40st	41st~110st	111st~200st								
32	96	44	110	78	98	63	24	48	124	33	45	83	42	4	4.5	3	6	M8×1.25	16	21
40	104	44	118	86	106	72	24	48	124	34	46	84	50	4	4.5	3	6	M8×1.25	16	22
50	130	60	146	110	130	92	24	48	124	36	48	86	66	5	6	4	8	M10×1.5	20	24
63	130	70	158	124	142	110	28	52	128	38	50	88	80	5	6	4	8	M10×1.5	20	24

Bore (mm)	A			DB		E		
	<50st	51st~100st	101st~200st	CGPM	CGPL	<50st	51st~100st	101st~200st
32	64	102	126	20	16	4.5	42.5	66.5
40	66	102	126	20	16	0	36	60
50	76	118	134	25	20	4	46	62
63	77	118	134	25	20	0	41	57