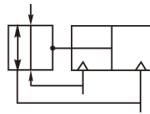


CHL Series Wide Type Air Gripper



Symbol



Product feature

- Long fingers extended travel, suitable for holding bulky items
- Double piston design, can increase retention
- Adopt gear rack operation, can make finger synchronous open and close
- Dust proof design, by using special seal

Specification

Bore(mm)	10	16	20	25	32	40
Fluid	Compressed air(non-lube)					
Action	Double acting					
Max. pressure MPa	0.6					
Min. pressure MPa	0.15	0.1				
Ambient and fluid temperature	-10~60°C					
Repeatability	±0.1mm					
Effective gripping force(0.5MPa)	14	45	74	131	228	396
Port size	M5x0.8				Rc1/8	

Ordering type

CHL2 - 16 D 2

Wide type gripper (2 figures)
Bore

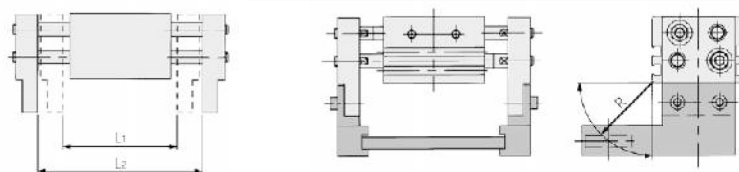
10	Ø10
16	Ø16
20	Ø20
25	Ø25
32	Ø32
40	Ø40

Double acting

Stroke

Bore	Φ10	Φ16	Φ20	Φ25	Φ32	Φ40
Null	20	30	40	50	70	100
1	40	60	80	100	120	160
2	60	80	100	120	160	200

Stroke table

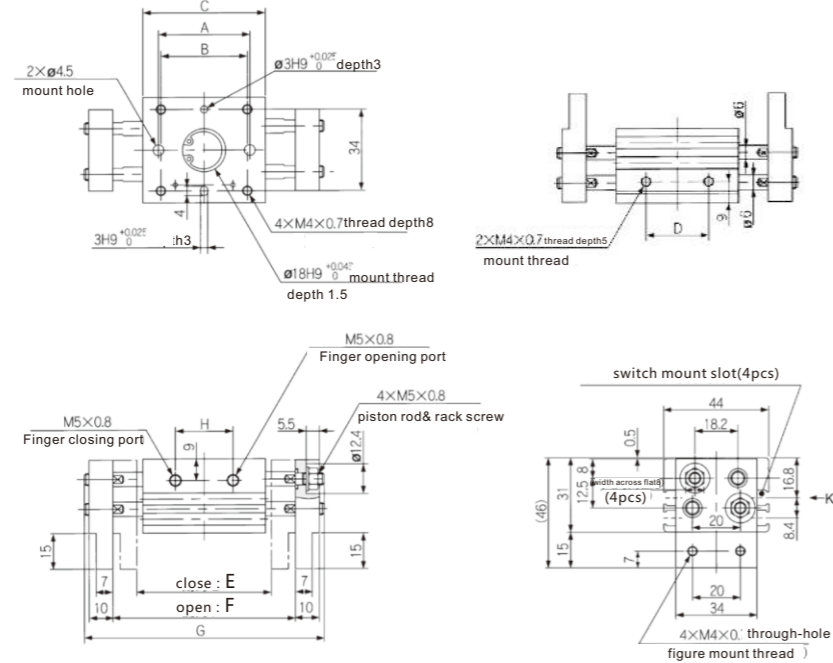


R : clamp distance(mm)

Series	Bore (mm)	Max. operating frequency c.p.m	Stroke open&closed mm (L2-L1)	Width open mm (L1)	Width closed mm (L1)
CHL2-10D	10	60	20	56	76
CHL2-10D1		40	40	78	118
CHL2-10D2		40	60	96	156
CHL2-16D	16	60	30	68	98
CHL2-16D1		40	60	110	170
CHL2-16D2		40	80	130	210
CHL2-20D	20	60	40	82	122
CHL2-20D1		40	80	142	222
CHL2-20D2		40	100	162	262
CHL2-25D	25	60	50	100	150
CHL2-25D1		40	100	182	282
CHL2-25D1		40	120	200	320
CHL2-32D	32	30	70	150	220
CHL2-32D1		20	120	198	318
CHL2-32D2		20	160	242	402
CHL2-40D	40	30	100	188	288
CHL2-40D1		20	160	246	406
CHL2-40D2		20	200	286	486

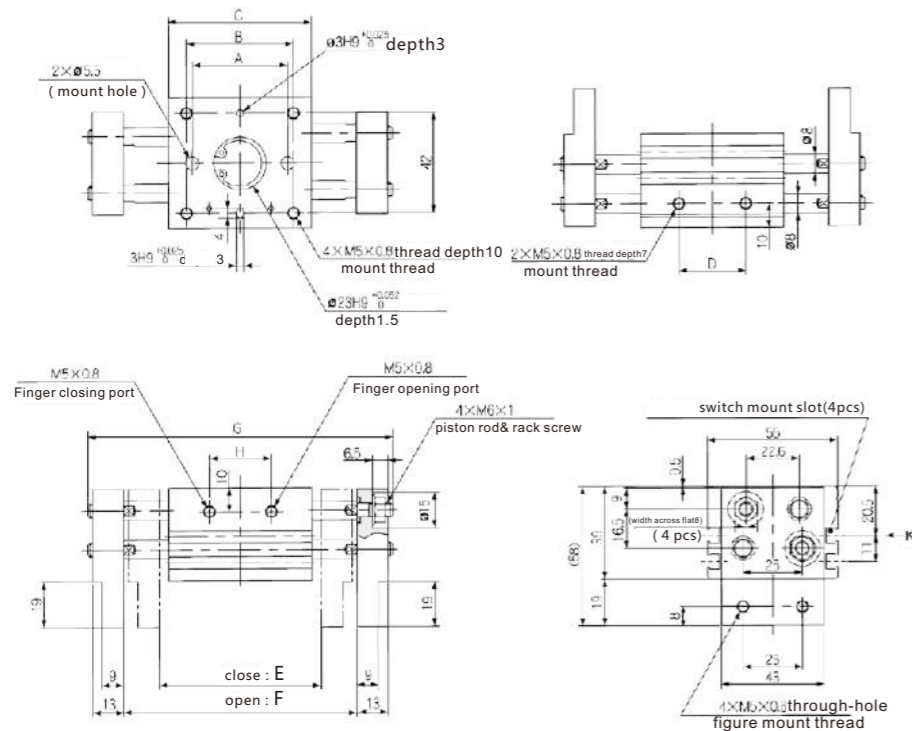
■ Dimensions (mm)

CHL2-10D□



Series	A	B	C	D	E	F	G	H
CHL2-10D	38	36	51	26	56	76	100	24
CHL2-10D1	54	52	67	42	78	118	142	39
CHL2-10D2	72	70	85	60	96	156	180	57

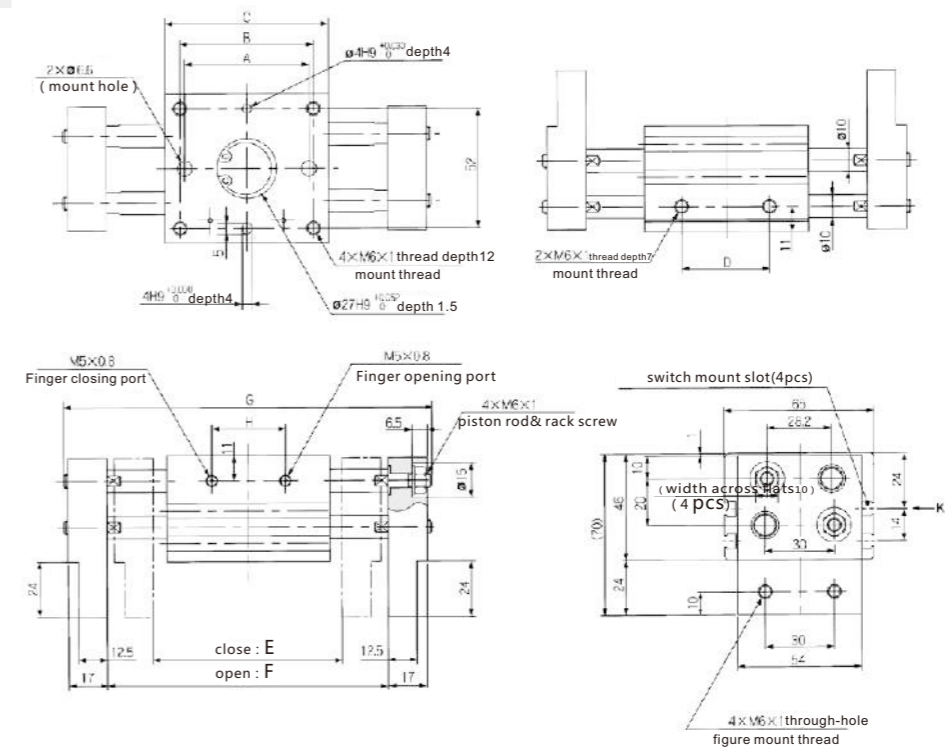
CHL2-16D□



Series	A	B	C	D	E	F	G	H
CHL2-16D	40	45	60	28	68	98	128	26
CHL2-16D1	70	75	90	58	110	170	200	50
CHL2-16D2	90	95	110	78	130	210	240	70

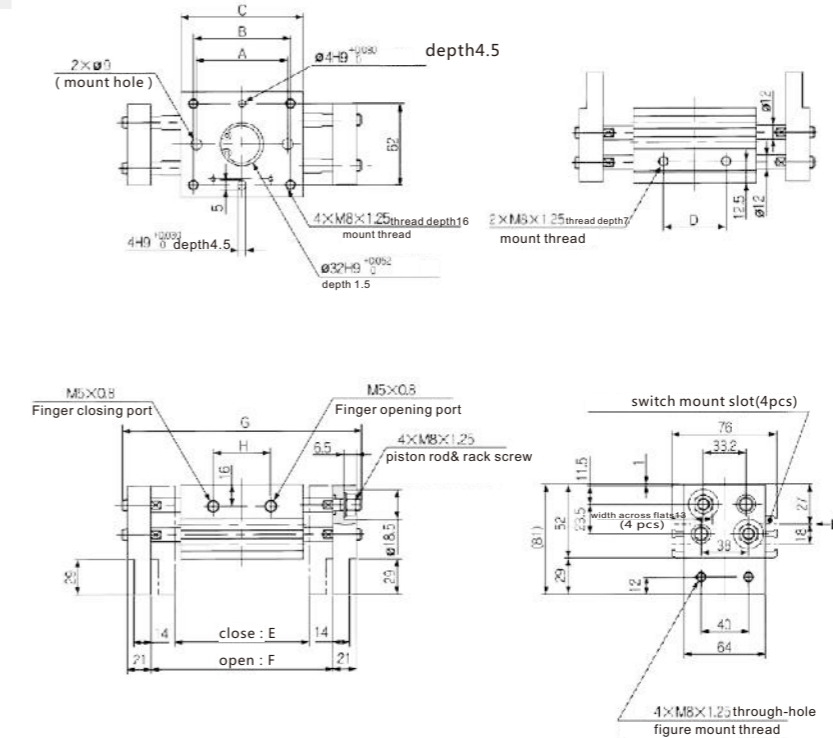
■ Dimensions (mm)

CHL2-20D□



Series	A	B	C	D	E	F	G	H
CHL2-20D	54	58	71	38	82	122	160	32
CHL2-20D1	96	100	113	80	142	222	260	68
CHL2-20D2	116	120	133	100	162	262	300	88

CHL2-25D□



Series	A	B	C	D	E	F	G	H
CHL2-25D	66	70	88	48	100	150	196	38
CHL2-25D1	120	124	142	102	182	282	328	86
CHL2-25D2	138	142	160	120	200	320	366	104