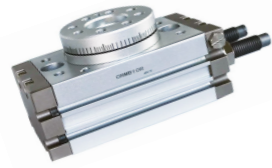
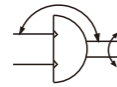


Product feature

High precision use ball bushing bearing, the position accuracy to $\pm 0.01\text{mm}$.
 Workpiece easy mount, great load power.
 Hollow shaft can be used to introduce the wires or piping.
 Standard with Angle adjustment device, adjust the Angle range ($0 \sim 190^\circ$), with magnet ring inside, switch can be installed.



Symbol

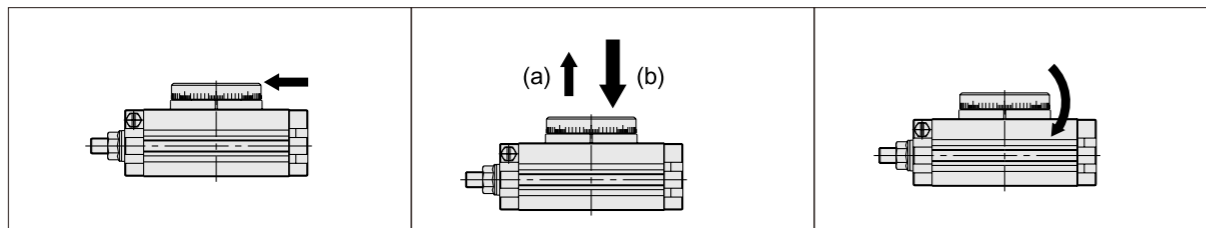
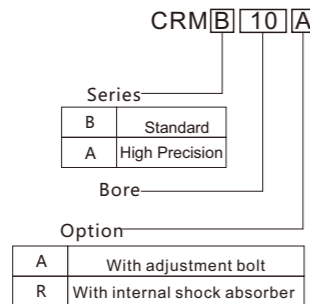


Specification

Series	10	20	30	50	70	100	
Fluid	Compressed air						
Action	Double acting						
Max. pressure	Adjustment bolt	1.0MPa(10.2kgf/cm ²)					
	Shock absorber	0.6MPa(6.1kgf/cm ²)					
Min. pressure	0.1MPa(1.0kgf/cm ²)						
Ambient and fluid temperature	0~60°C						
Cushion	Rubber bumper(standard)/Shock absorber(optional)						
Allowable kinetic energy	Adjustment bolt	0.007J	0.025J	0.048J	0.081J	0.24J	0.32J
	Shock absorber	0.039J	0.116J	0.116J	0.294J	1.1J	1.6J
Angle adjustment range	0~190°						
Maximum rotation	190°						
Stable swing time range	Adjustment bolt	0.2~1.0s/90°			0.2~1.5s/90°	0.2~2.0s/90°	
	Shock absorber	0.2~0.7s/90°			0.2~1.0s/90°		
Piston diameter	Φ15	Φ18	Φ21	Φ25	Φ28	Φ32	
Port size	M5x0.8			Rc1/8			

Note: the max. pressure is restricted the maximum allowable loads of hydraulic absorber.

Ordering code

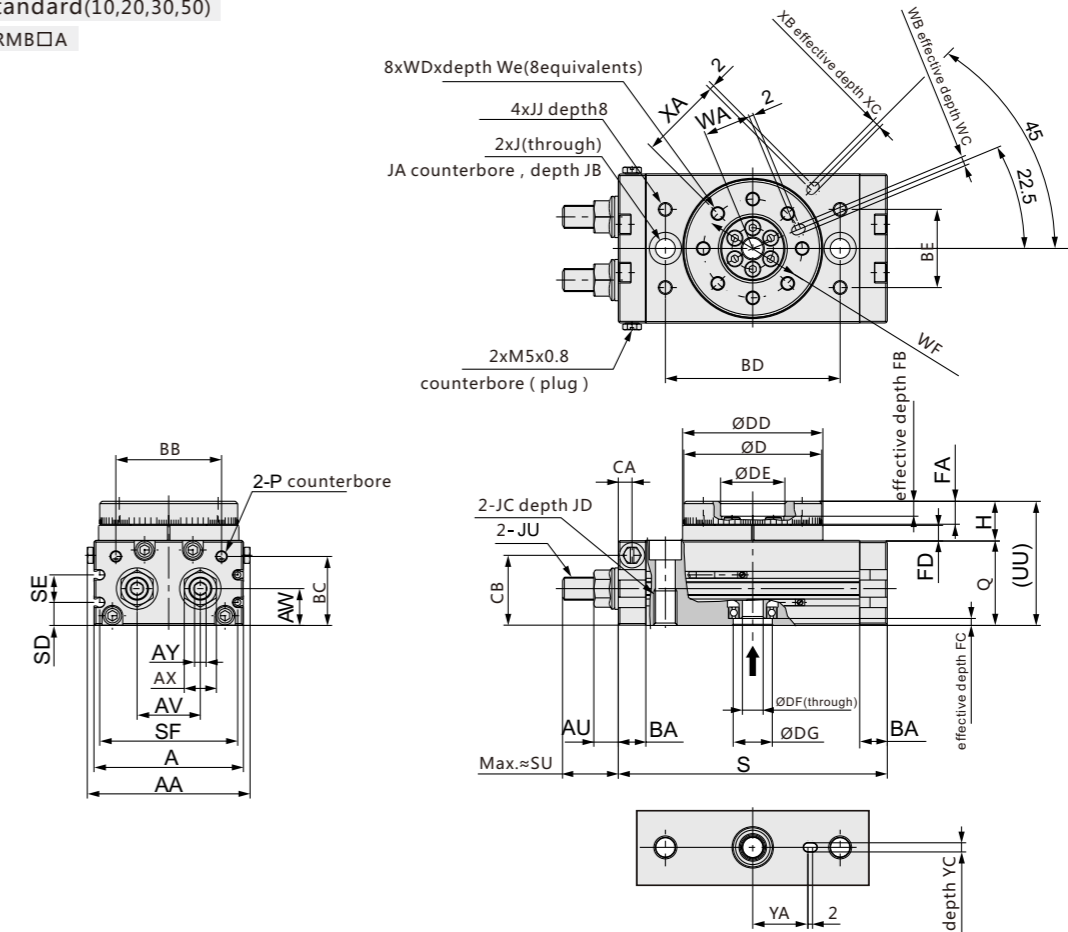


Series	Allowable kinetic energy(N)		Allowable axial load(N)				Allowable bending moment(N.m)		Efficient output torque (N.m) (<0.5MPa)
	Standard	High Precision	Series		Series		Standard	High Precision	
			Standard	High Precision	Standard	High Precision			
CRM□10□		86	74	74	78	107	2.4	2.9	0.89
CRM□20□	147	166	137	137	137	197	4.0	4.8	1.84
CRM□30□	196	233	197	197	363	398	5.3	6.4	2.73
CRM□50□	314	378	296	296	451	517	9.7	12	4.64
CRM□70□	333	-	296	-	476	-	12.0	-	6.79
CRM□100□	390	-	493	-	708	-	18.0	-	10.1

Dimensions (mm)

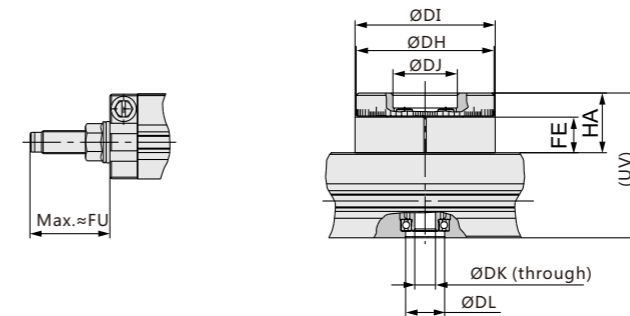
Standard(10,20,30,50)

CRMB□A



Shock absorber
 CRMA□R
 CRMB□R

High Precision
 CRMA□A/with adjustment bolt
 CRMB□R/with shock absorber



Series	DH	DI	DJ	DK	DL	FE	HA	UV
10	45h8	46h8	20H8	6	15H8	10	18.5	52.5
20	60h8	61h8	28H8	9	17H8	15.5	26	63
CRMA30	65h8	67h8	32H8	12	22H8	16.5	27	67
CRMB30	65h8	67h8	32H8	9	22H8	16.5	27	67
50	75h8	77h8	35H8	13	26H8	17.5	30	76

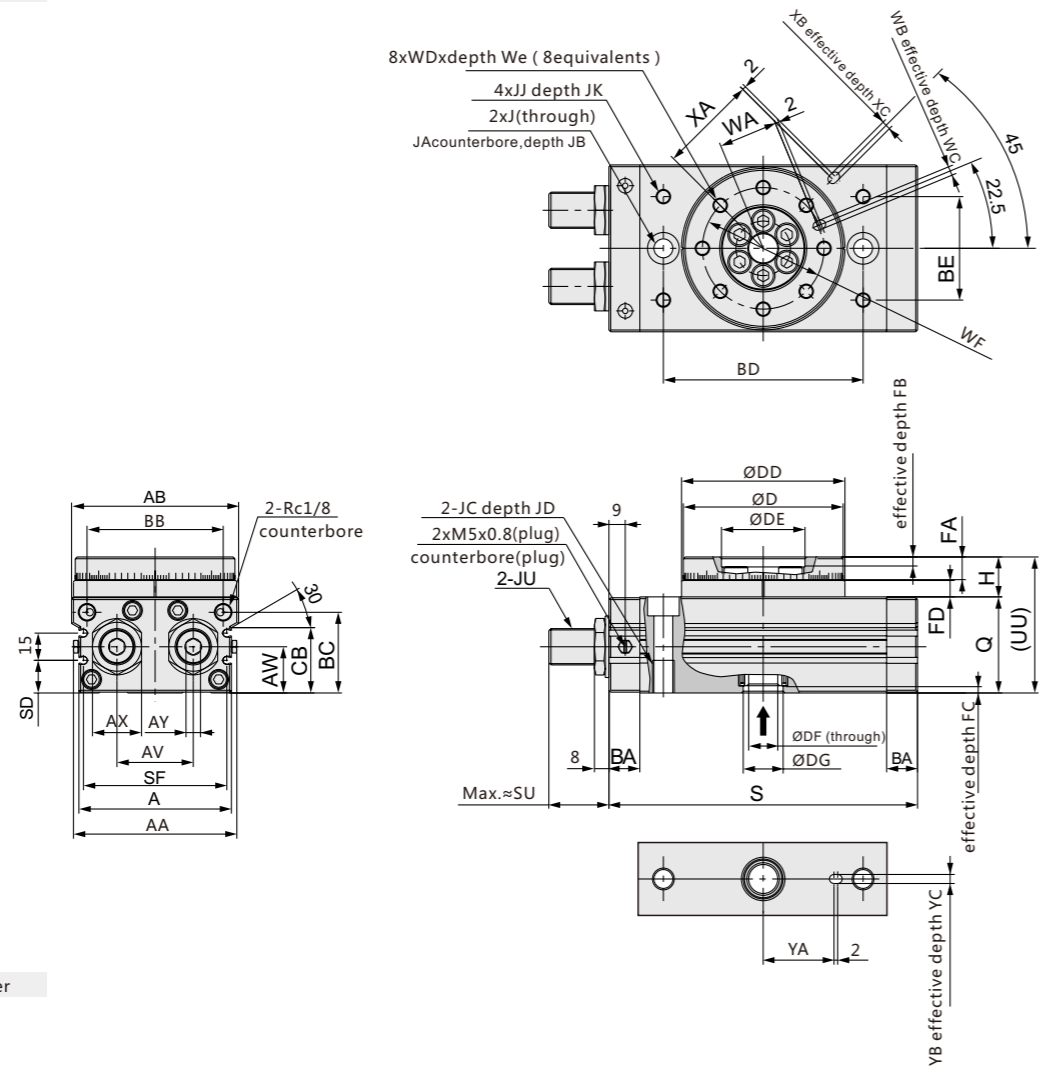
Series	AA	A	AU	AV	AW	AX	AY	BA	BB	BC	BD	BE	CA	CB	D	DD	DE	DF	DG	FA	FB	FC	FD	H	J	JA	JB
10	55.4	50	6.6	20	15.5	12	4	9.5	34.5	27.8	60	27	4.5	28.5	45h9	46h9	20H9	6	15H9	8	4	3	4.5	13	6.8	11	6.5
20	70.8	65	7.6	27.5	16	14	5	12	46	30	76	34	6	30.5	60h9	61h9	28H9	9	17H9	10	6	2.5	6.5	17	8.6	14	8.5
30	75.4	70	7.6	29	18.5	14	5	12	50	32	84	37	6.5	33.5	65h9	67h9	32H9	12	22H9	10	4.5	3	6.5	17	8.6	14	8.5
50	85.4	80	10	38	22	19	6	15.5	63	37.5	100	50	10	37.5	75h9	77h9	35H9	13	26H9	12	5	3	7.5	20	10.5	18	10.5

Series	JC	JD	JJ	JU	P	Q	S	SD	SE	SF	SU	UU	WA	WB	WC	WD	WE	WF	XA	XB	XC	YA	YB	YC
10	M8X1.25	12	M5X0.8	M8X1.0	M5X0.8	34	92	9	13	45	17.7	47	15	3H9	3.5	M5X0.8	8	32	27	3H9	3.5	19	3H9	3.5
20	M10X1.5	15	M6X1.0	M10X1.0	M5X0.8	37	117	10	12	60	25	54	20.5	4H9	4.5	M6X1.0	10	43	36	4H9	4.5	24	4H9	4.5
30	M10X1.5	15	M6X1.0	M10X1.0	Rc1/8	40	127	11.5	14	65	25	57	23	4H9	4.5	M6X1.0	10	48	39	4H9	4.5	28	4H9	4.5
50	M12X1.75	18	M8X1.25	M14X1.5	Rc1/8	46	152	14.5	15	75	31.4	66	26.5	5H9	5.5	M8X1.25	12	55	45	5H9	5.5	33	5H9	5.5

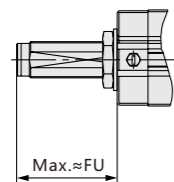
■ Dimensions (mm)

Standard(70,100)

CRMB□A



Shock absorber
CRMB□R



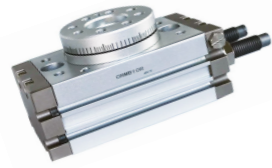
Series	FU
70	55.4
100	55.5

Series	AA	AB	A	AV	AW	AX	AY	BA	BB	BC	BD	BE	CB	D	DD	DE	DF	DG	FA	FB	FC	FD	H	J	JA	JB
70	90	92	84	42	25.5	27	8	17	75	44.5	110	57	36	88h9	90h9	46H9	16	22H9	12.5	5	3.5	9	22	10.4	17.5	10.5
100	101	102	95	50	29.5	27	8	17	85	50.5	130	66	42	98h9	100h9	56H9	19	24H9	14.5	6	3.5	12	27	10.4	17.5	10.5

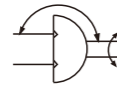
Series	JC	JD	JJ	JK	JU	Q	S	SD	SF	SU	UU	WA	WB	WC	WD	WE	WF	XA	XB	XC	YA	YB	YC
70	M12X1.75	18	M8X1.25	10	M20X1.5	53	170	18	79	34.2	75	32.5	5H9	5.5	M8X1.25	12.5	67	54	5H9	3.5	39	5H9	3.5
100	M12X1.75	18	M8X1.25	10	M20X1.5	59	189	22	90	34.3	86	37.5	6H9	6.5	M10X1.5	14.5	77	59	6H9	4.5	49	6H9	4.5

Product feature

High precision use ball bushing bearing, the position accuracy to $\pm 0.01\text{mm}$.
 Workpiece easy mount, great load power.
 Hollow shaft can be used to introduce the wires or piping.
 Standard with Angle adjustment device, adjust the Angle range ($0 \sim 190^\circ$), with magnet ring inside, switch can be installed.



Symbol

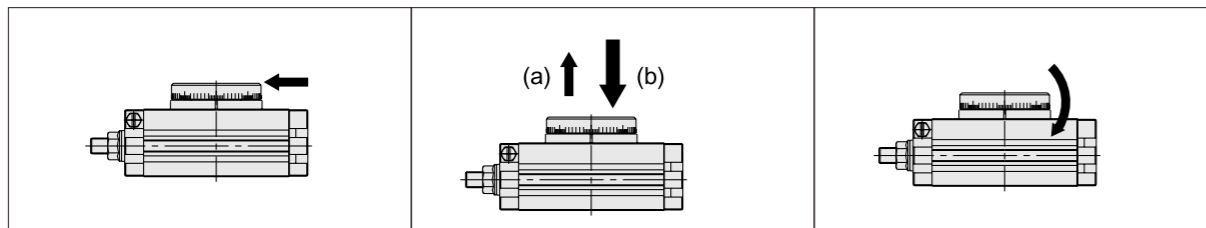
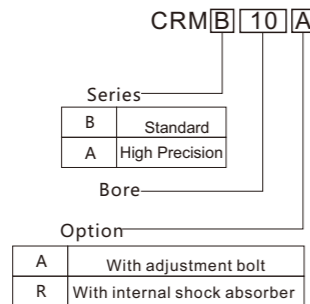


Specification

Series	10	20	30	50	70	100	
Fluid	Compressed air						
Action	Double acting						
Max. pressure	Adjustment bolt	1.0MPa(10.2kgf/cm ²)					
	Shock absorber	0.6MPa(6.1kgf/cm ²)					
Min. pressure	0.1MPa(1.0kgf/cm ²)						
Ambient and fluid temperature	0~60°C						
Cushion	Rubber bumper(standard)/Shock absorber(optional)						
Allowable kinetic energy	Adjustment bolt	0.007J	0.025J	0.048J	0.081J	0.24J	0.32J
	Shock absorber	0.039J	0.116J	0.116J	0.294J	1.1J	1.6J
Angle adjustment range	0~190°						
Maximum rotation	190°						
Stable swing time range	Adjustment bolt	0.2~1.0s/90°			0.2~1.5s/90°	0.2~2.0s/90°	
	Shock absorber	0.2~0.7s/90°			0.2~1.0s/90°		
Piston diameter	Φ15	Φ18	Φ21	Φ25	Φ28	Φ32	
Port size	M5x0.8			Rc1/8			

Note: the max. pressure is restricted the maximum allowable loads of hydraulic absorber.

Ordering code

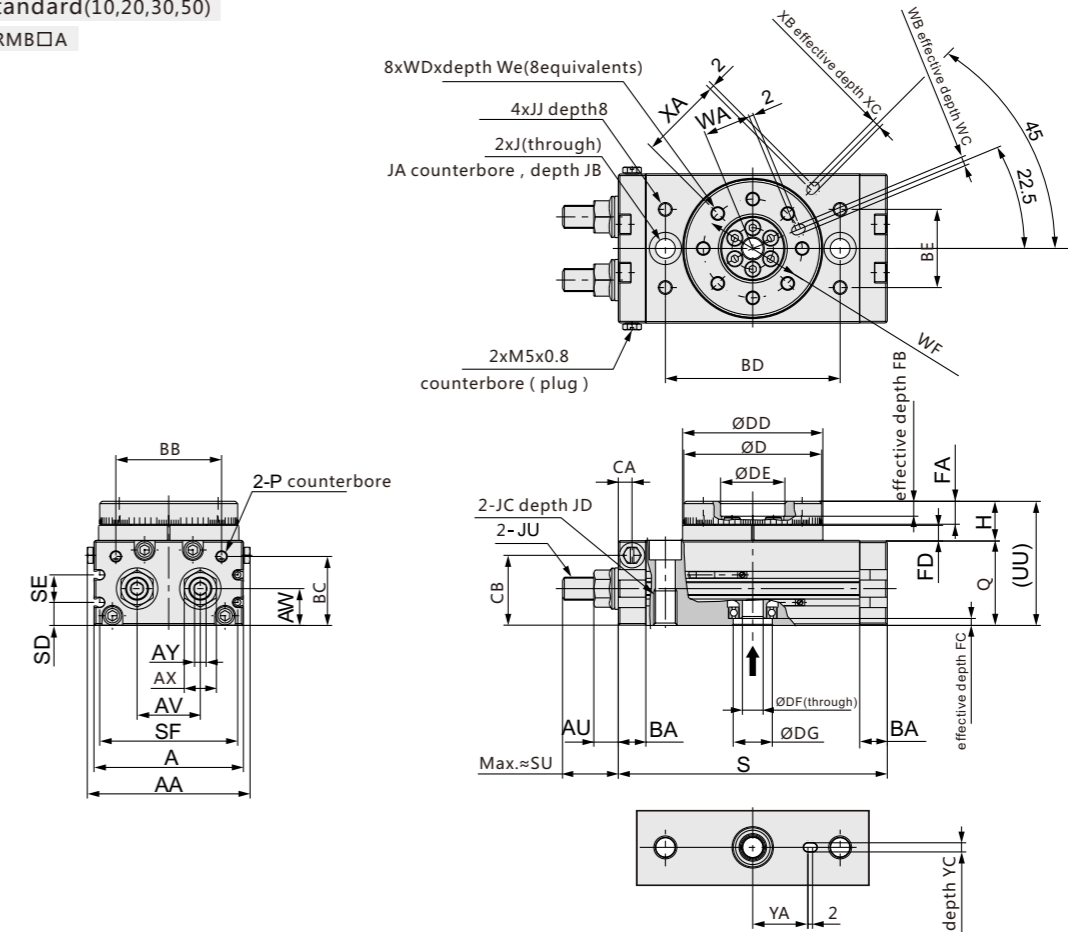


Series	Allowable kinetic energy(N)		Allowable axial load(N)				Allowable bending moment(N.m)		Efficient output torque (N.m) (<0.5MPa)
	Standard	High Precision	Series		Standard	High Precision	Standard	High Precision	
			Standard	High Precision					
CRM□10□		86	74	74	78	107	2.4	2.9	0.89
CRM□20□	147	166	137	137	137	197	4.0	4.8	1.84
CRM□30□	196	233	197	197	363	398	5.3	6.4	2.73
CRM□50□	314	378	296	296	451	517	9.7	12	4.64
CRM□70□	333	-	296	-	476	-	12.0	-	6.79
CRM□100□	390	-	493	-	708	-	18.0	-	10.1

Dimensions (mm)

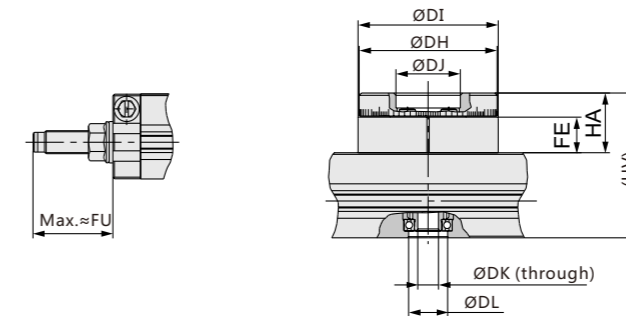
Standard(10,20,30,50)

CRMB□A



Shock absorber
 CRMA□R
 CRMB□R

High Precision
 CRMA□A/with adjustment bolt
 CRMB□R/with shock absorber



Series	DH	DI	DJ	DK	DL	FE	HA	UV
10	45h8	46h8	20H8	6	15H8	10	18.5	52.5
20	60h8	61h8	28H8	9	17H8	15.5	26	63
CRMA30	65h8	67h8	32H8	12	22H8	16.5	27	67
CRMB30	65h8	67h8	32H8	9	22H8	16.5	27	67
50	75h8	77h8	35H8	13	26H8	17.5	30	76

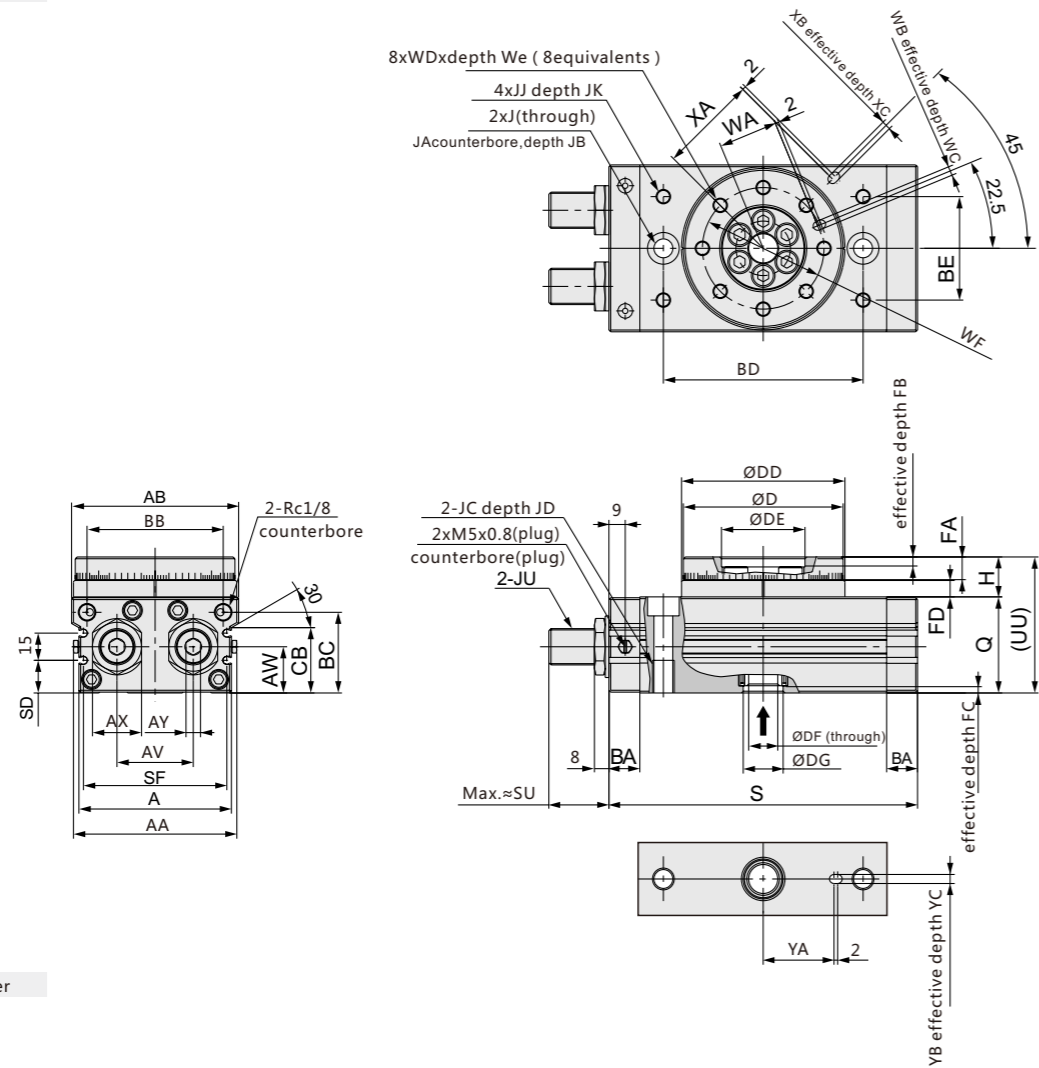
Series	AA	A	AU	AV	AW	AX	AY	BA	BB	BC	BD	BE	CA	CB	D	DD	DE	DF	DG	FA	FB	FC	FD	H	J	JA	JB
10	55.4	50	6.6	20	15.5	12	4	9.5	34.5	27.8	60	27	4.5	28.5	45h9	46h9	20H9	6	15H9	8	4	3	4.5	13	6.8	11	6.5
20	70.8	65	7.6	27.5	16	14	5	12	46	30	76	34	6	30.5	60h9	61h9	28H9	9	17H9	10	6	2.5	6.5	17	8.6	14	8.5
30	75.4	70	7.6	29	18.5	14	5	12	50	32	84	37	6.5	33.5	65h9	67h9	32H9	12	22H9	10	4.5	3	6.5	17	8.6	14	8.5
50	85.4	80	10	38	22	19	6	15.5	63	37.5	100	50	10	37.5	75h9	77h9	35H9	13	26H9	12	5	3	7.5	20	10.5	18	10.5

Series	JC	JD	JJ	JU	P	Q	S	SD	SE	SF	SU	UU	WA	WB	WC	WD	WE	WF	XA	XB	XC	YA	YB	YC
10	M8X1.25	12	M5X0.8	M8X1.0	M5X0.8	34	92	9	13	45	17.7	47	15	3H9	3.5	M5X0.8	8	32	27	3H9	3.5	19	3H9	3.5
20	M10X1.5	15	M6X1.0	M10X1.0	M5X0.8	37	117	10	12	60	25	54	20.5	4H9	4.5	M6X1.0	10	43	36	4H9	4.5	24	4H9	4.5
30	M10X1.5	15	M6X1.0	M10X1.0	Rc1/8	40	127	11.5	14	65	25	57	23	4H9	4.5	M6X1.0	10	48	39	4H9	4.5	28	4H9	4.5
50	M12X1.75	18	M8X1.25	M14X1.5	Rc1/8	46	152	14.5	15	75	31.4	66	26.5	5H9	5.5	M8X1.25	12	55	45	5H9	5.5	33	5H9	5.5

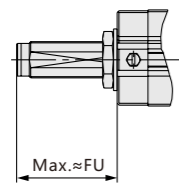
■ Dimensions (mm)

Standard(70,100)

CRMB□A



Shock absorber
CRMB□R



Series	FU
70	55.4
100	55.5

Series	AA	AB	A	AV	AW	AX	AY	BA	BB	BC	BD	BE	CB	D	DD	DE	DF	DG	FA	FB	FC	FD	H	J	JA	JB
70	90	92	84	42	25.5	27	8	17	75	44.5	110	57	36	88h9	90h9	46H9	16	22H9	12.5	5	3.5	9	22	10.4	17.5	10.5
100	101	102	95	50	29.5	27	8	17	85	50.5	130	66	42	98h9	100h9	56H9	19	24H9	14.5	6	3.5	12	27	10.4	17.5	10.5

Series	JC	JD	JJ	JK	JU	Q	S	SD	SF	SU	UU	WA	WB	WC	WD	WE	WF	XA	XB	XC	YA	YB	YC
70	M12X1.75	18	M8X1.25	10	M20X1.5	53	170	18	79	34.2	75	32.5	5H9	5.5	M8X1.25	12.5	67	54	5H9	3.5	39	5H9	3.5
100	M12X1.75	18	M8X1.25	10	M20X1.5	59	189	22	90	34.3	86	37.5	6H9	6.5	M10X1.5	14.5	77	59	6H9	4.5	49	6H9	4.5