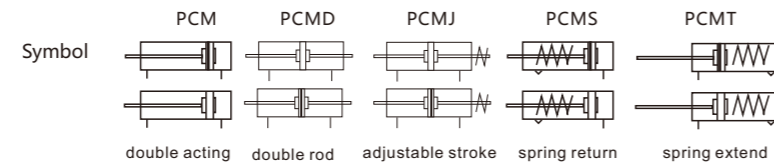


Implement JIS standard



Specification

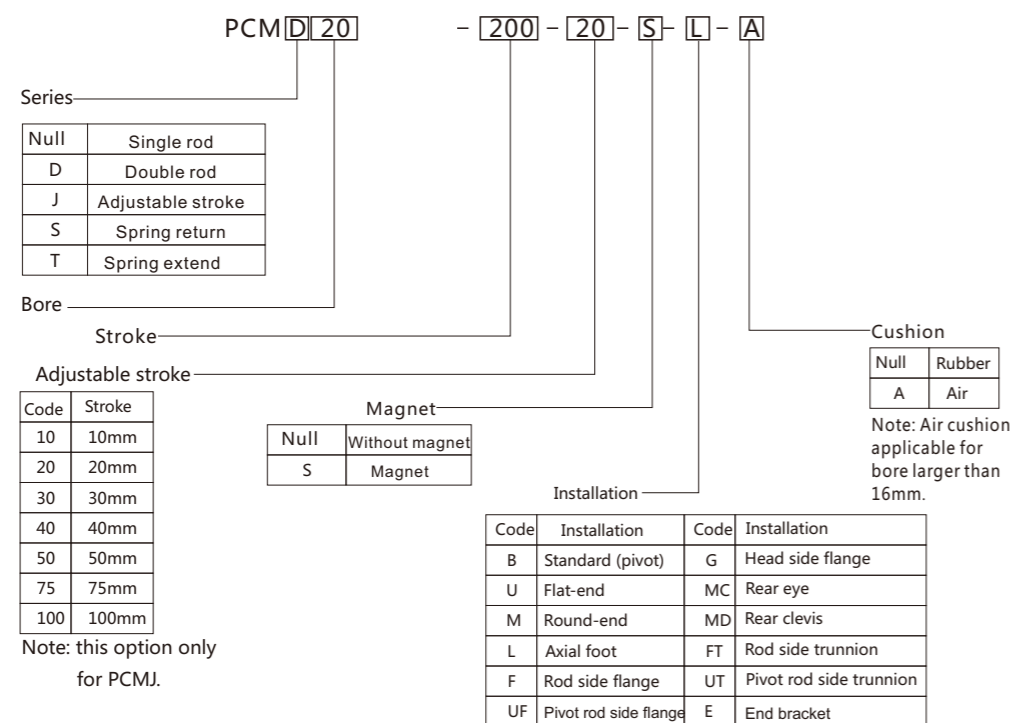
Bore size(mm)	20	25	32	40
Fluid	Compressed air			
Action	Double acting, Single acting			
Max. pressure MPa	1.0Mpa			
Min. pressure MPa	Double acting : 0.1, Single acting : 0.2			
Ambient and fluid temperature	Without switch : -10°C~70°C, With switch -10°C~60°C			
Piston speed	50~750mm/s			
Cushion	Rubber bumper/Air cushion			
Port size	Rc1/8	Rc1/8	Rc1/8	Rc1/4

Stroke/Auto switch model

Bore (mm)	Single acting	Double acting		Switch model	Mount code (48 type)	Switch model (direct mount)
	Standard stroke	Standard stroke	Max.			
20	10 15 20 25 30 40 50 60 75 80 100	10 15 20 25 30 40 50 60 75 80 100 125 150 160 175 200 250 300 350 400 450 500	500		BS-S20	
25	10 15 20 25 30 40 50 60 75 80 100		500		BS-S25	
32	10 15 20 25 30 40 50 60 75 80 100	10 15 20 25 30 40 50 60 75 80 100 125 150 160 175 200 250 300 350 400 450 500	500		BS-S32	
40	10 15 20 25 30 40 50 60 75 80 100		500		BS-S40	

Non-standard stroke is available, contact us if any special requirement.

Ordering code



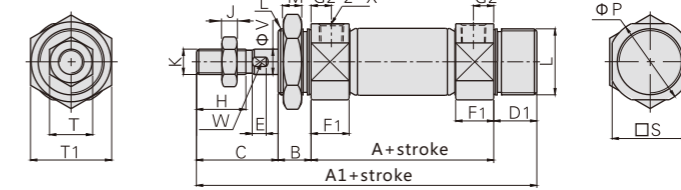
Note: this option only for PCMJ.

Note: E only can combine with B type.
L,F,FT,MC and MD default M type installation.
PCMD and PCMJ basic type don't have this option.

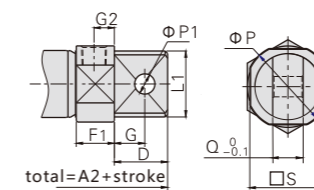
Dimensions (mm)

PCM/PCM-A(standard/air cushion)

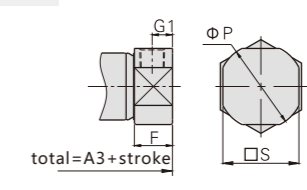
Round-end-M



Pivot-B



Flat-end-U

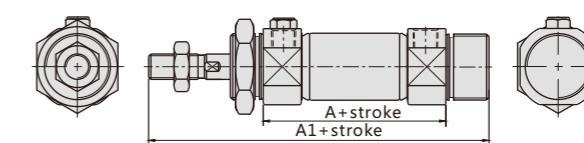


Bore	A	A1	A2	A3	B	C	D	D1	E	F	F1	G	G1	G2	H	J
20	62	116	124	103	13	28	21	14	5	14	14	12	7.5	7.5	16	5
25	62	120	128	108	13	32	21	14	5.5	14	14	12	7.5	7.5	20	6
32	64	122	136	110	13	32	27	14	6	14	14	15	7.5	7.5	20	6
40	88	154	165	138	16	34	27	16	6	21	21	15	11	11	22	8

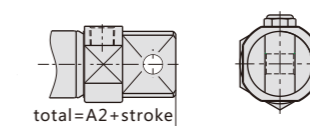
Bore	K	L	L1	M	P	P1	Q	S	T	T1	X	V
20	M8×1.25	M20×1.5	20	8	27	8	12	25	13	26	Rc1/8	8
25	M10×1.25	M26×1.5	26	8	30	8	12	30	17	36	Rc1/8	10
32	M10×1.25	M26×1.5	26	8	38.5	10	20	34.5	17	36	Rc1/8	12
40	M14×1.5	M32×2.0	32	10	47	10	20	42.5	19	41	Rc1/4	16

PCMS (Spring return)

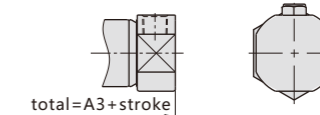
Round-end-M



Pivot-B



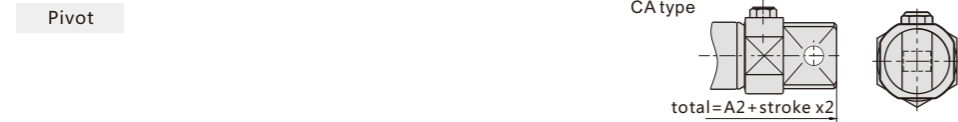
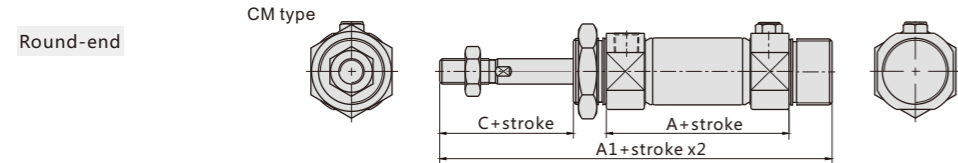
Flat-end-U



Symbol	A		A1		A2		A3	
	1~50	51~100	1~50	51~100	1~50	51~100	1~50	51~100
20	87	112	141	166	149	174	128	153
25	87	112	145	170	153	178	133	158
32	89	114	147	172	161	186	135	160
40	113	138	179	204	190	215	163	188

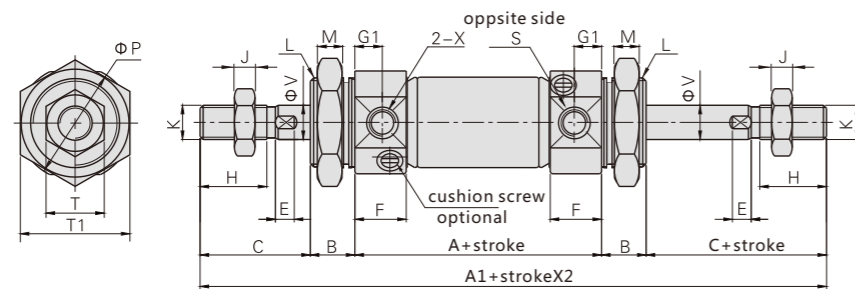
■ Dimensions (mm)

PCMT (Spring extend)

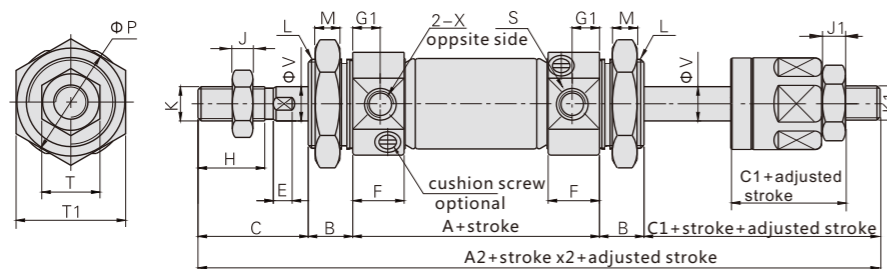


Symbol Bore	A		A1		A2		A3		C
	1~50	51~100	1~50	51~100	1~50	51~100	1~50	51~100	
20	87	112	141	166	149	174	128	153	27
25	87	112	145	170	153	178	133	158	31
32	89	114	147	172	161	186	135	160	31
40	113	138	179	204	190	215	163	188	34

PCMD/PCMD-A (Double rod/Double rod air cushion)



PCMJ/PCMJ-A (Adjustable stroke/Adjustable stroke air cushion)

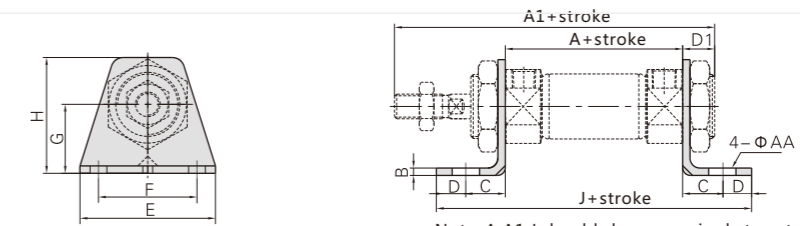


Bore	A	A1	A2	B	C	C1	E	F	G1	H	J	J1
20	62	144	140	13	28	24	5	14	7.5	16	5	5
25	62	152	147	13	32	27	5.5	14.5	7.5	20	6	6
32	64	154	149	13	32	27	6	14.5	7.5	20	6	6
40	88	188	182	16	34	28	7	21.5	11	22	8	7

Bore	K	K1	L	M	P	S	T	T1	X	V
20	M8×1.25	M8×1.25	M20×1.5	8	27	25	13	26	Rc1/8	8
25	M10×1.25	M10×1.25	M26×1.5	8	30	30	17	36	Rc1/8	10
32	M10×1.25	M10×1.25	M26×1.5	8	38.5	34.5	17	36	Rc1/8	12
40	M12×1.5	M14×1.5	M32×2.0	10	47	42.5	19	41	Rc1/4	16

■ Dimensions (mm)

Axial foot

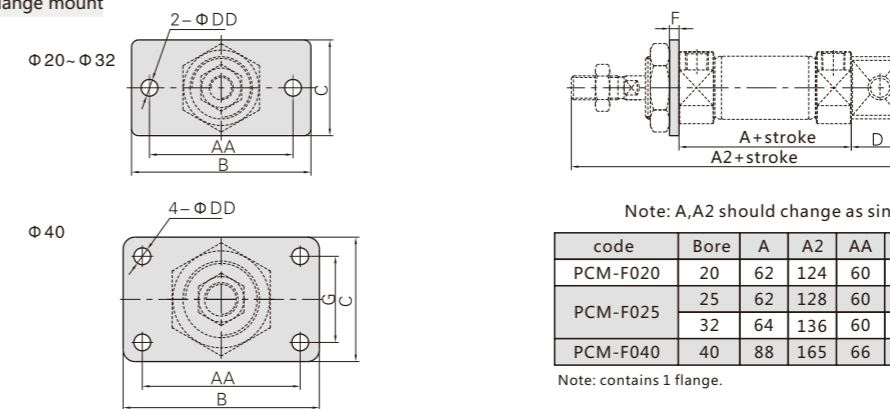


Note: A,A1,J should change as single type table when single acting.

code	Bore	A	A1	AA	B	C	D	D1	E	F	G	H	J
PCM-L020	20	62	116	7	3	20	8	13	55	40	25	40	118
PCM-L025	25	62	120	7	3	20	8	13	55	40	28	47	118
	32	64	22	7	3	20	8	13	55	40	28	47	120
PCM-L040	40	88	154	7	3	23	10	16	75	55	30	54	154

Note: contains 2 foot stands and 1nut.

Flange mount

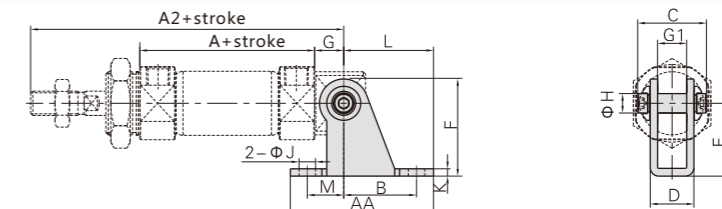


Note: A,A2 should change as single type table when single acting.

code	Bore	A	A2	AA	B	C	D	DD	F	G
PCM-F020	20	62	124	60	75	34	21	7	4	—
PCM-F025	25	62	128	60	75	40	21	7	4	—
	32	64	136	60	75	40	27	7	4	—
PCM-F040	40	88	165	66	82	52	27	7	5	36

Note: contains 1 flange.

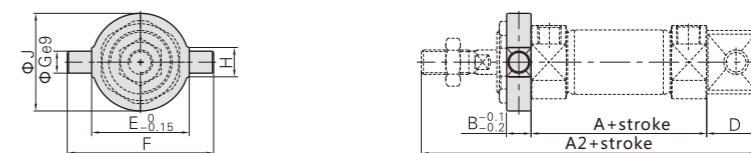
End bracket mount



Note: A,A2 should change as single type table when single acting.

code	Bore	A	A2	AA	B	C	D	E	F	G	G1	H	K	J	L	M
PCM-E020	20	62	115	59	30	32	18.1	30	40	12	12.1	8	3	6.8	37	15
	25	62	119	59	30	32	18.1	30	40	12	12.1	8	3	6.8	37	15
PCM-E032	32	64	124	75	40	44	28.1	40	53	15	20.1	10	4	9	50	15
	40	88	153	75	40	44	28.1	40	53	15	20.1	10	4	9	50	15

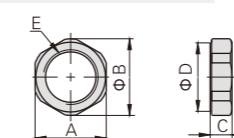
Rod side trunnion



Note: A,A2 should change as single type table when single acting.

code	Bore	A	A2	B	D	E	F	G	H	J
PCM-T020	20	62	124	10	21	32	52	8	12	32
PCM-T025	25	62	128	10	21	40	60	9	12	40
	32	64	135	10	27	40	60	9	12	40
PCM-T040	40	88	165	11	27	53	77	10	14	53

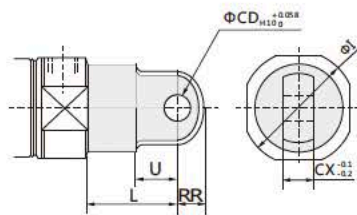
Rod side trunnion lock nut



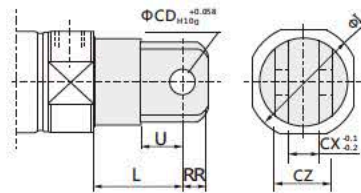
code	Bore	A	B	C	D	E
PCM-SN020	20	26	28	8	25	M20×1.5
PCM-SN025	25	32	34	8	31	M26×1.5
	32	32	34	8	31	M26×1.5
PCM-SN040	40	41	45	10	40	M32×2.0

■ Dimensions (mm)

Rear eye



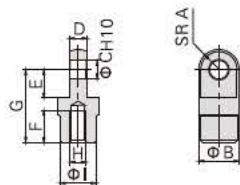
Rear clevis



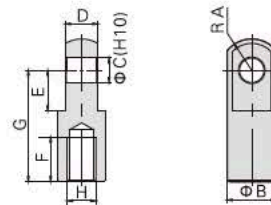
Bore (mm)	Rear eye							Rear clevis							
	code	L	U	RR	ΦI	ΦCD	CX	Series	L	U	RR	ΦCD	CX	CZ	ΦI
20	PCM-C020	30	14	9	28	9	10	PCM-D020	30	14	9	9	10	19	28
25	PCM-C025	30	14	9	33.5	9	10	PCM-D025	30	14	9	9	10	19	33.5
32		30	14	9	37.5	9	10		30	14	9	9	10	19	37.5
40	PCM-C040	30	14	11	46.5	10	15	PCM-D040	30	14	11	10	15	30	46.5

I type fitting

PCM-I020
PCM-I025



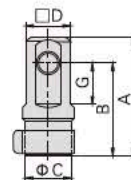
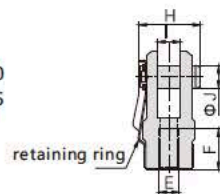
PCM-I040



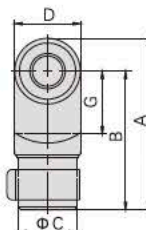
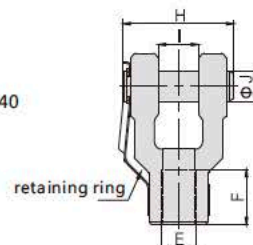
code	Bore	A	B	C	D	E	F	G	H	I
PCM-I020	20	9.5	20	9	9	14	16	36	M8X1.25	18
PCM-I025	25, 32	9.5	20	9	9	14	18	38	M10X1.25	18
PCM-I040	40	15	24	12	16	20	22	55	M14X1.5	-

Y type fitting

PCM-Y020
PCM-Y025



PCM-Y040



code	Bore	A	B	C	D	E	F	G	H	I	J
PCM-Y020	20	46	36	18	17.5	M8X1.25	16	16	24	9	9
PCM-Y025	25, 32	48	38	18	17.5	M10X1.25	18	16	24	9	9
PCM-Y040	40	68	55	23	26	M14X1.5	22	25	44	16	12