

# XY Directional Valve Series



## XY5000 Series



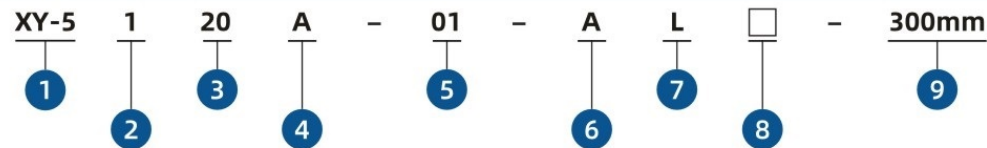
### FEATURES

1. Low power consumption, energy saving and environmental protection,
2. High working frequency, high working pressure, widely used
3. Smaller size, saving space
4. Multiple connection method
5. Sliding column structure have good sealing and sensitive response
6. The inner hole is processed by special technology, with low friction resistance, low starting air pressure and long service life
7. The valve group can be integrated with the base, which save installation space

### SPECIFICATION

Model No.	XY5120A	XY5220A	XY5320A	XY5420A	XY5520A
	XY5140A	XY5240A	XY5340A	XY5440A	XY5540A
Working Medium	Compressed Air (filtered by 40μm filter screen)				
Valve Type	5/2 Single Coil	5/2 Double Coil	5/3 center close type	5/3 center exhaust type	5/3 center pressure type
Port Size	Inlet = Outlet = Exhaust= G1/8 (XY5_20) Namur Type (XY5_40)				
Working Pressure	0.15-0.7		0.2-0.7		
Ensured Pressure Resistance	1.0				
Operating Temperature	-5℃ ~ -50℃				
Max. Operating Frequency	5		3		
Connection Method	Vertical / Parallel / Vertical Parallel				
Voltage Range	Rated Voltage ± 10%				
Protection Class	IP65				
Main Material	Aluminum				

### ORDERING CODE

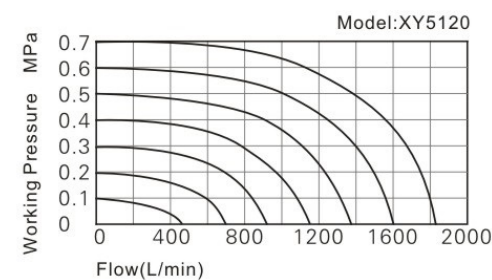


1. Model Series  
XY-5
2. Valve Type  
1: 5/2 Single Coil  
2: 5/2 Double Coil  
3: 5/3 Double coil center close type  
4: 5/3 Double coil center exhaust type  
5: 5/3 Double coil center pressure type
3. Connection Method  
20: Thread Type  
40: Namur Type
4. Manual Operation  
A: Press the lock button then turn
5. Connection Port  
01: G1/8 02: PT1/8  
03: NPT1/8
6. Voltage Type  
A: AC220V B: DC24V  
C: AC110V D: DC12V  
E: AC24V
7. Wire Lead Type  
L: Vertical M: Parallel  
N: Vertical Parallel  
P: Pin Type
8. Indicator light, surge, voltage protection circuit  
Blank: With indicator light,  
no surge and voltage protection  
R: With indicator light,  
surge and voltage protection  
Z: No indicator light,  
surge and voltage protection  
Z: No indicator light,  
with surge and voltage protection  
\* No indicator light for pin type
9. Wire Length  
300mm 600mm Customized

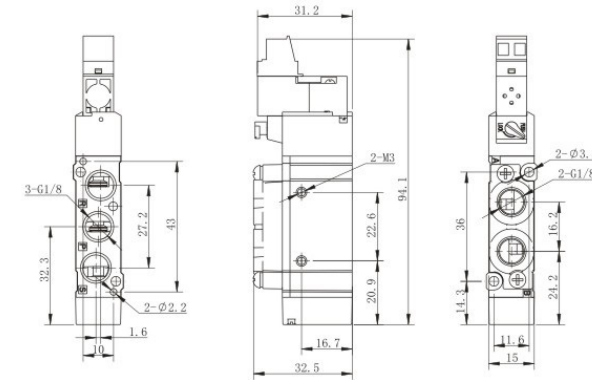
### INSTALL AND OPERATION

1. When taking the solenoid valve, do not drop or drop it to avoid damage to the solenoid valve.
2. Due the pilot valve is a precision component, please do not crush the pilot valve to avoid damage.
3. Do not disassemble the solenoid valve when using, if the pilot valve screw (M1.6×14) is accidentally loose, please tighten it with a torque range of 0.1~0.12N.m.

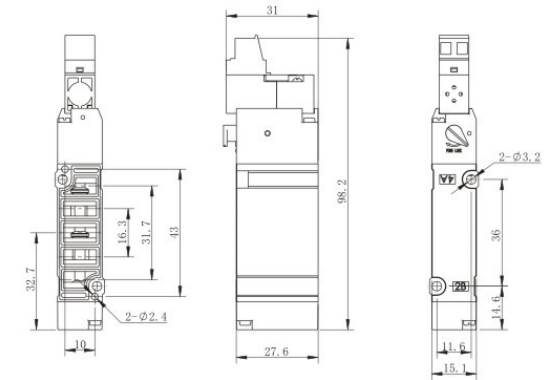
### FLOW CHARACTERISTICS



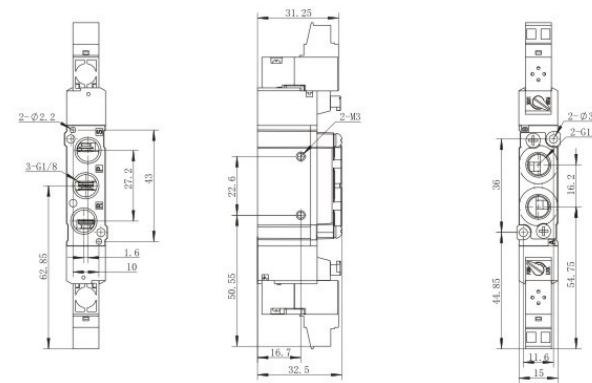
### XY5120 Dimensional Graphy



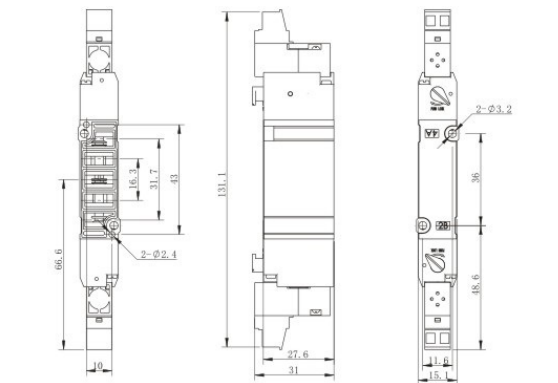
### XY5140 Dimensional Graphy



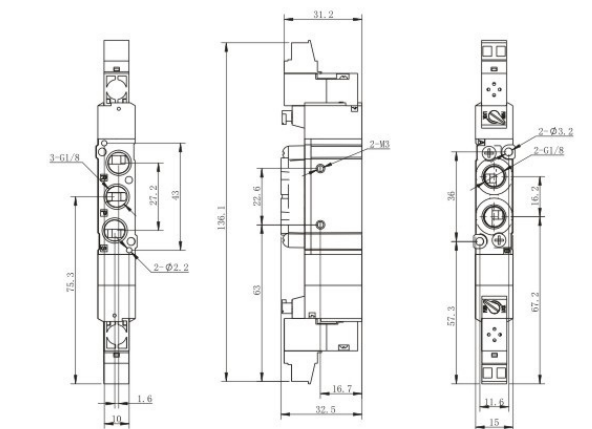
### XY5220 Dimensional Graphy



### XY5240 Dimensional Graphy



### XY5320 Dimensional Graphy



### XY5340 Dimensional Graphy

